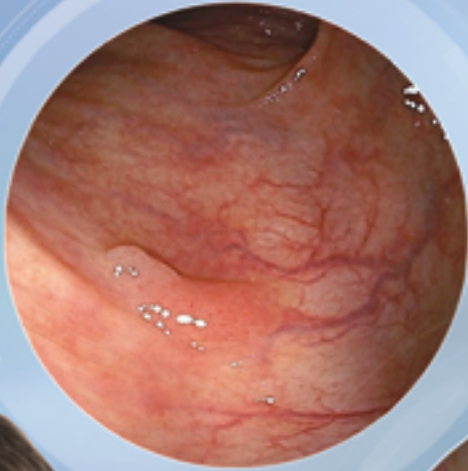


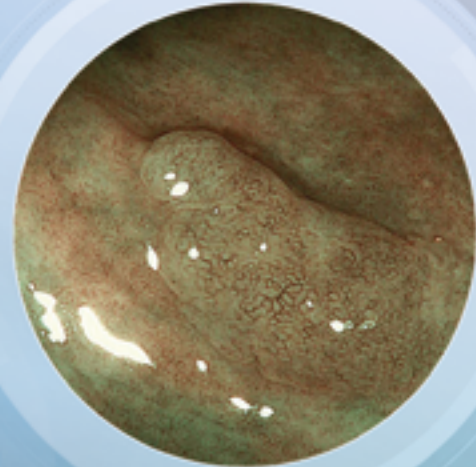


DUOMED

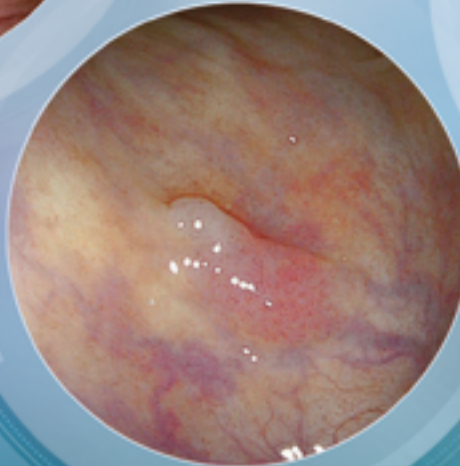
WHITE LIGHT
IMAGING



BLI MODE
(ZOOM)



LCI MODE



ELUXEO *Lite*

WITH MULTI LIGHT™ TECHNOLOGY

FUJIFILM
Value from Innovation



LCI & BLI THE NEW STANDARD

The high performance Multi Light™ technology enables creation of images meeting the highest standards in brightness and contrast, suitable for intended purposes through image processing combined with accurate control of intensity ratio between multiple lights.

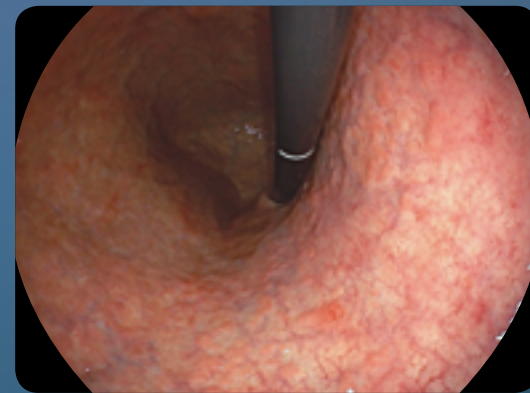
WHITE LIGHT IMAGING

It uses white light to depict subjects in natural colors as well as short wavelength light for higher contrast of fine vessels and structures of mucous membrane surface layers to create sharp images.

LCI & BLI

By adding signal processing to the images obtained through these lights, it is possible to provide not only white light observation mode but also LCI (Linked Colour Imaging) and BLI (Blue Light Imaging) modes.

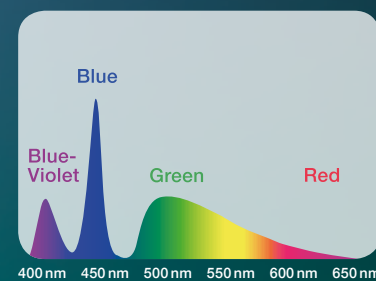
WHITE LIGHT IMAGING



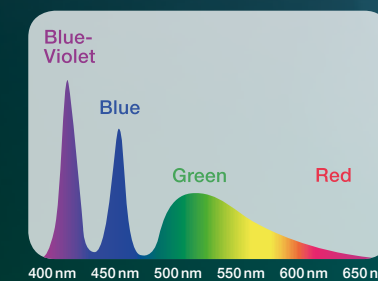
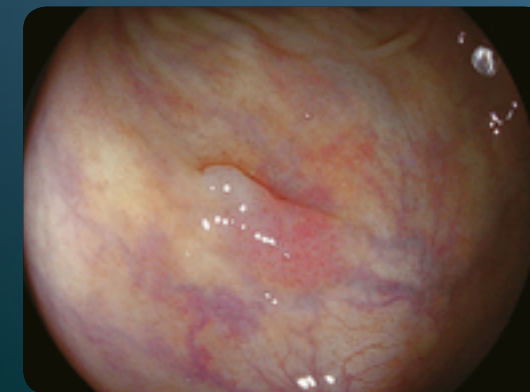
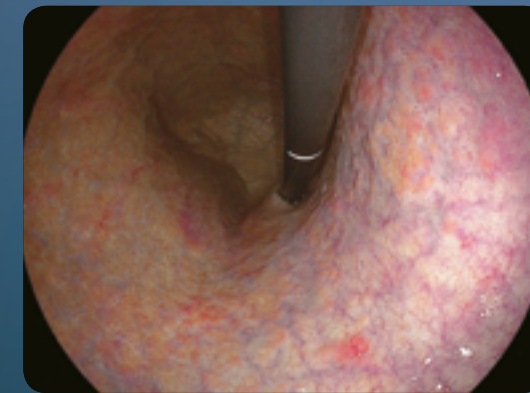
Stomach



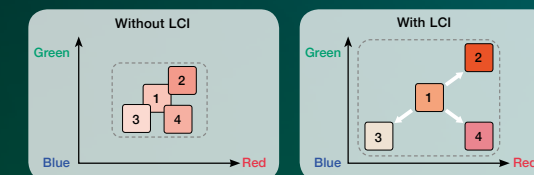
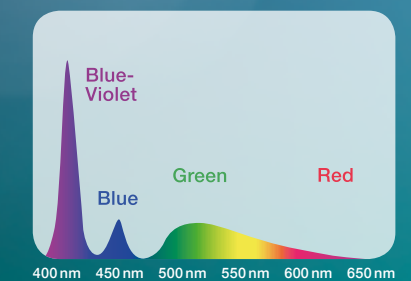
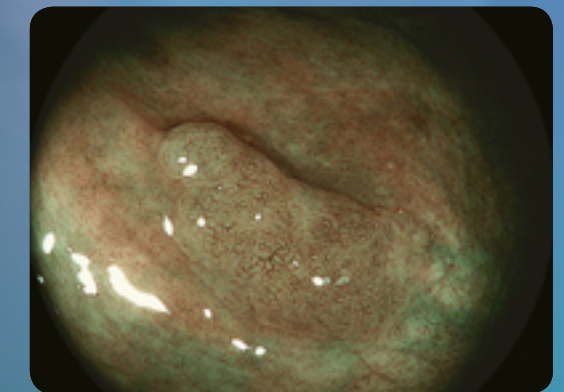
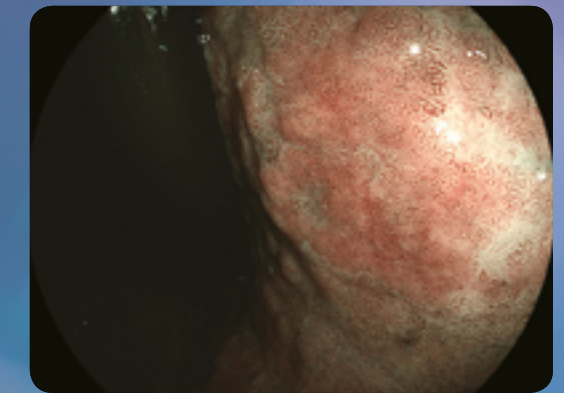
Colon



LCI MODE



BLI MODE



INNOVATIVE TECHNOLOGIES



ANTI-BLUR FUNCTION
The clearest image among multiple images is automatically selected.



CLOSE FOCUS
Close Focus observation up to 2 mm supports more precise diagnosis.



HD TECHNOLOGY
Combine equipment displaying this logo to ensure that you view HDTV images on your monitor.



LCI (LINKED COLOUR IMAGING) MODE
Increased contrast in red colour leads to improved detection of inflammation and accurate delineation.

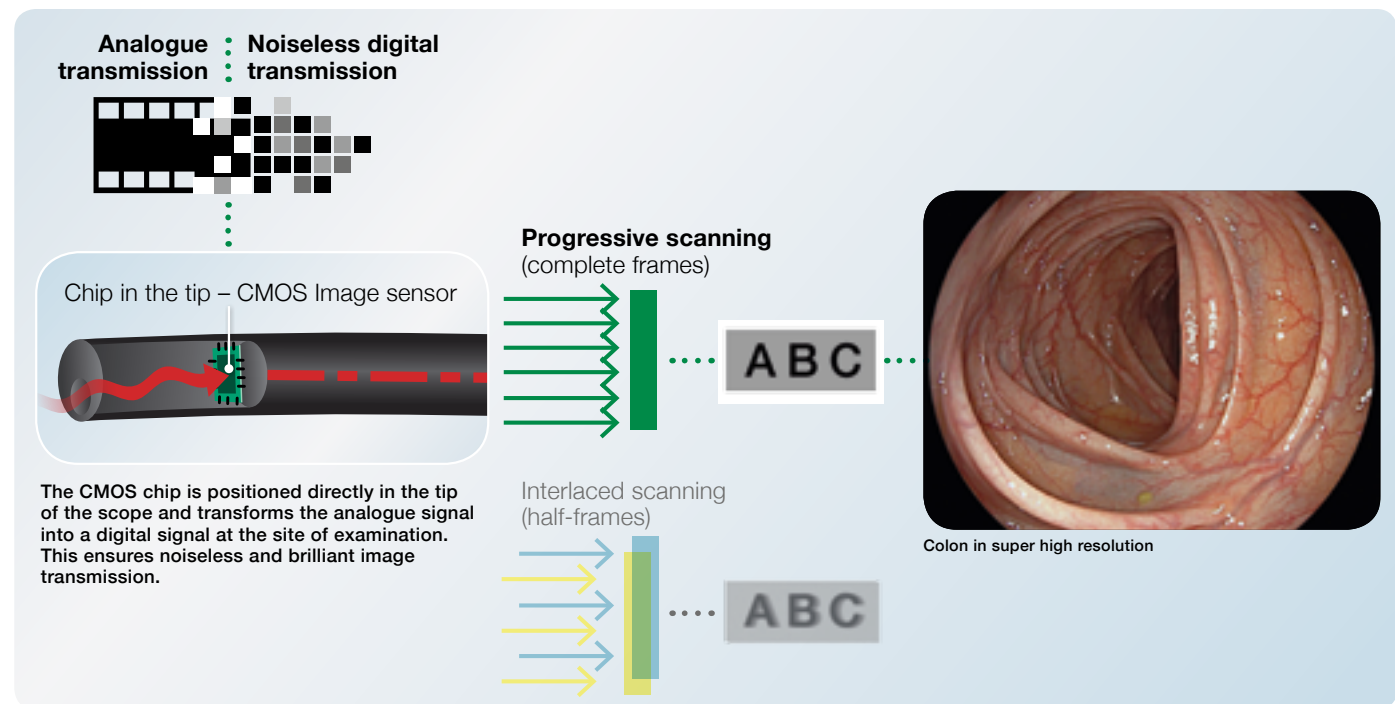


BLI (BLUE LIGHT IMAGING) MODE
The combination of special light wavelengths results in improved and accurate contrast imaging.

FACILITATE SMOOTH EXAMINATION

FUJIFILM'S LEADING-EDGE CMOS TECHNOLOGY WITH MEGAPIXEL

With the unique CMOS chip built directly into the tip of the scope, the signal is digitally transmitted through the device, thus providing outstanding high-resolution imaging. CMOS technology supports 60 frames progressive scanning technology where complete images are processed, rather than the half-frames processed when using the interlaced scanning method. The result is an outstanding high-resolution image quality and smooth moving images with dramatically reduced blurring.

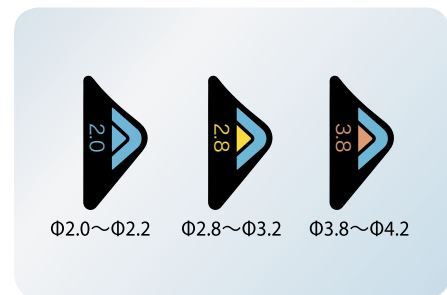


G7 GRIP FOR OPTIMUM COMFORT IN DAILY PRACTICE

In close cooperation with leading endoscopists, Fujifilm has renewed the layout and size of the components of the control portion and repositioned the angulation knobs to increase accessibility from the grip. The G7 grip is designed to have an easy and comfortable feel that optimises performance and minimises stress during clinical procedures.

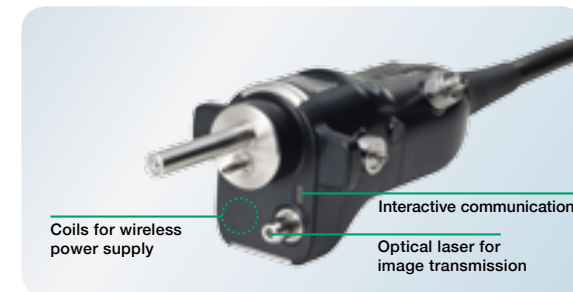


- 1 Colour of G7 control portion
- 2 Identification colour of working channel size
- 3 Working channel diameter
- 4 Corporate brand logo
- 5 Model No.



ONE-STEP CONNECTOR FOR EASY PLUG-IN

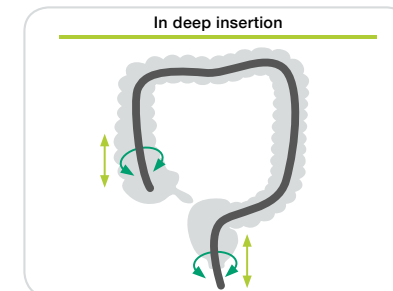
The One-Step Connector can be plugged in easily and the 700 series endoscopes are the first to incorporate an integrated wireless power supply that provides high speed transmission of data. The new design helps to simplify the cleaning process and also reduces the potential for accidental damage.



INSERTION PERFORMANCE

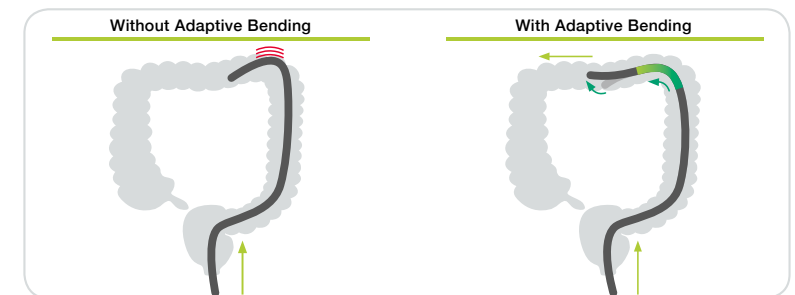
ADVANCED FORCE TRANSMISSION

The flexible portion is designed to transmit the pushing, pulling and rotating movements from the hand to the distal end of the endoscope, which provides enhanced manoeuvrability inside the digestive tract.



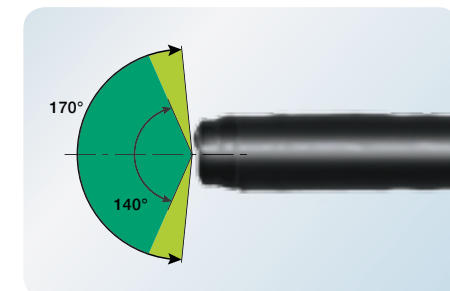
ADAPTIVE BENDING

The end of the bending section is soft, allowing the scope to follow the natural contours of the intestinal tract. The flexible bending section has been designed to return more easily to its straight form after passing through the tight curves of the colon.



WIDE 170° FIELD OF VIEW

Wide 170° field of view is available with EC-720RM / RI / RL. Even areas that are hard to observe such as the reverse side of folds could be observed and approached smoothly.

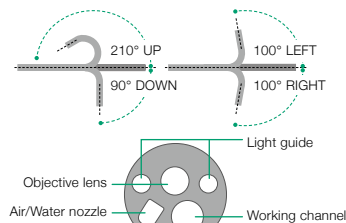


SPECIFICATIONS

ELUXEO™ Lite VIDEO GASTROSCOPE EG-720R



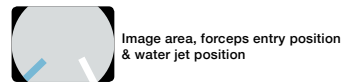
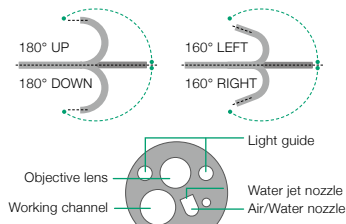
Field of view	140°
Observation range	2–100 mm
Bending capability	Up 210° / Down 90° Right 100° / Left 100°
Distal end diameter	9.2 mm
Insertion tube diameter	9.3 mm
Working channel diameter	2.8 mm
Working length	1,100 mm
Total length	1,400 mm



ELUXEO™ Lite VIDEO COLONOSCOPE EC-720RM / RI / RL



Field of view	170°
Observation range	2–100 mm
Bending capability	Up 180° / Down 180° Right 160° / Left 160°
Distal end diameter	12.8 mm
Insertion tube diameter	12.8 mm
Working channel diameter	3.8 mm
Working length	1,330/1,520/1,690 mm
Total length	1,630/1,820/1,990 mm



ACCESSORIES

FOR ROUTINE EXAMINATION



Air/water valve AW-603
 Suction valve SB-605



Water tank WT-603

USED WITH CO₂ REGULATOR GW-100



Gas/water valve AW-604G



Water tank WT-604G

ELUXEO™ Lite VIDEO PROCESSOR WITH BUILT-IN LED LIGHT SOURCE EP-6000



The compact ELUXEO™ Lite EP-6000 combines a reliable 3-LED light source with a processor that enables you to make use of the many features provided by Fujifilm's wide range of scopes. Combined with the 700 series the innovative visualisation modes LCI (Linked Colour Imaging) and BLI (Blue Light Imaging) are available. Due to the use of economical LED lamps with a long durability this system is very eco-friendly. It is also compatible with the 600 and 500 series of scopes. The ELUXEO™ Lite EP-6000 creates quality images and videos displayed in full HD on the monitor. Automatic back-up mode for data storage is integrated and the processor is also DICOM compatible.



Light source	3 LED
Air supply pump	High, Mid, Low, Off
Compatible scopes	760, 740, 720, 600, 580, 530 series*
Output	DVI-D x2, RGB-TV x1, S VIDEO x1, VIDEO x1
Internal memory	4 GB
External memory	USB Flash Drive
Power rating	100-240 V - 50/60 Hz - 2.0-1.1 A
Dimensions (W x H x D)	395 x 210 x 485 mm (including projection)
Weight	15.0 kg
Optical radiation safety	Class 1 LED product

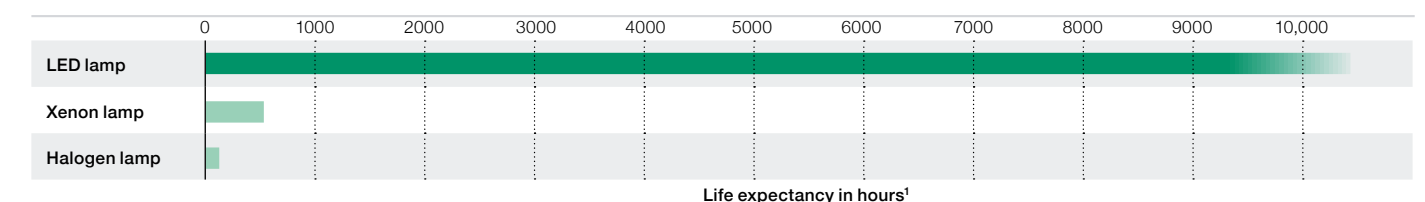
Available observation modes	
700 system scopes	White Light / BLI / LCI / FICE
500 / 600 system scopes	White Light / FICE

* Excluding EG-530UT2, EG-530UT, EG-530UR2 and EG-530UR



LED MULTI LIGHT™ SOURCE WITH HIGH DURABILITY

A reliable light source is a prerequisite for use in large clinics as well as smaller outpatient centres to ensure procedures can take place as scheduled. With a 10,000 hours¹ average life expectancy of the LED lights, the ELUXEO™ system has a far longer durability while having a much lower energy consumption, resulting in a better cost-efficiency.



Our confidence is reflected by Fujifilm's **Durability Warranty**, which covers any defect of the LED light source unit that is attributable to a manufacturing or assembly fault under normal use for a period of five years or 10,000 operating hours, whichever comes first.²

¹ Based on Fujifilm's recommended conditions.

² This Warranty is only valid according to the terms and conditions of the Durability Warranty Policy.



**ADVANCING DEEPER INSIGHTS
IN ENDOSCOPY**



DUOMED

Duomed Swiss AG

Grenzstrasse 5a, 6214 Schenkon

Tel.: +41 (0)41 510 07 00

www.duomed.com

FUJIFILM

FUJIFILM Europe GmbH

Heesenstr. 31, 40549 Düsseldorf, Germany

Tel.: +49 211-50 89 0, Fax: +49 211-50 89 8700

www.fujifilm.eu, endoscopy_eu@fujifilm.com