

G-EYE® 760 R



G-EYE® FEATURING *ELUXEO*™





ENHANCED DETECTION CAPABILITIES

The G-EYE® 760R endoscope is equipped with a permanently integrated balloon at the bending section of the routine colonoscope. On demand, the re-usable balloon can be inflated, thereby flattening the colonic walls and improving the detection of hidden polyps¹. The diagnostic yield is expected to further be supplemented by increased colour contrast of the Linked Color Imaging (LCI) mode that was specifically developed to improve detection of lesions or inflammation, resulting in more accurate delineation.

Besides detection enhancement, physicians could benefit from the G-EYE® system throughout the whole procedure, from assistance in delooping during intubation, via Controlled Withdrawal™ that reduces bowel slippage, through to supporting therapeutic interventions e. g. EMR/ESDs by stabilising and anchoring the endoscope tip.

KEY BENEFITS

1

Straightening intestinal folds

2

Controlled Withdrawal™

Centralising endoscope optics, reducing bowel slippage

3

Endoscope stabilisation during interventional sessions

¹ Clinical Evidence: Shirin, H. et al. G-EYE colonoscopy is superior to standard colonoscopy for increasing adenoma detection rate: an international randomized controlled trial (September 2018 Gastrointestinal Endoscopy 89(3) DOI: 10.1016/j.gie.2018.09.028)
Halpern, Z. et al. Comparison of adenoma detection and miss rates between a novel balloon colonoscope and standard colonoscopy: a randomized tandem study (Endoscopy 2015; 47(03): 238-244 DOI: 10.1055/s-0034-1391437)

ADDING VALUE THROUGHOUT THE WHOLE PROCEDURE

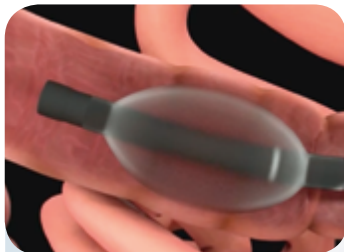
INTUBATION



G-EYE®

COULD BE USED FOR DELOOPING WITH ANCHORING FUNCTION

DETECTION



G-EYE®

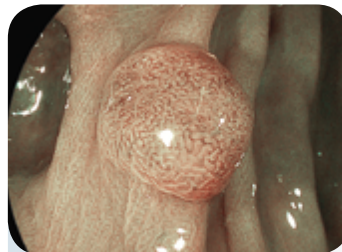
FLATTENS TOPOGRAPHY TO DETECT HIDDEN POLYPS

Controlled Withdrawal™ with partially inflated balloon



for detection

CHARACTERISATION



G-EYE®

STABILISES THE ENDOSCOPE DURING CHARACTERISATION

Controlled Withdrawal™ with partially inflated balloon



for characterisation

TREATMENT



G-EYE®

STABILISES THE ENDOSCOPE DURING TREATMENT



Optimal illumination using variable LED light intensity.



Noiseless and brilliant image transmission thanks to a CMOS-chip positioned directly in the tip.



Increased contrast in red colour leads to improved detection of inflammation and accurate delineation.



The combination of special light wavelengths results in improved and accurate contrast imaging.



Easy to plug in with an integrated wireless power supply to provide high speed transmission of data.



Grip is designed to have a comfortable feel to optimise performance and minimise stress.



Provided as standard to help keep the field of observation clear.



Optimised for the 700 series colonoscopes including the Flexibility Adjuster for easier insertion in addition to Advanced Force Transmission and Adaptive Bending.



A wide 170° field of view is available for an easier visualisation.



Close focus observation up to 2 mm supports more precise diagnosis.



Combine equipment displaying this logo to ensure that you view HDTV images on your monitor.

A SMART **SYNERGY**



**ELUXEO™
TECHNOLOGY**

**INTEGRATED
BALLOON**

SPECIFICATIONS

G-EYE® 760R



The G-EYE® endoscope is based on the ELUXEO™ EC-760R routine colonoscope, comes in three different lengths and features the same technical specifications including LCI and BLI imaging modes.



Field of view	170°
Observation range	2–100 mm
Bending capability*	Up 180°/Down 180° Right 160°/Left 160°
Distal end diameter	12.0 mm
Insertion tube diameter	12.0 mm
Working channel diameter	3.8 mm
Working length	1,330/1,520/1,690 mm
Total length	1,650/1,840/2,010 mm
Balloon diameter	Up to 55 mm

* when balloon is deflated

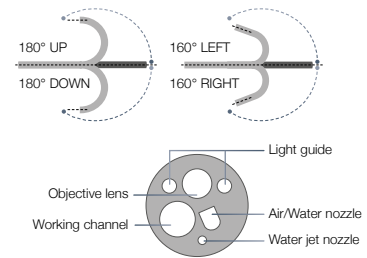


Image area, forceps entry position & water jet position

SIMPLE OPERATION

SPARK²C INFLATION SYSTEM

Inflation and deflation of the balloon can easily be controlled by the hand-held control or foot panel. Three intermediate pressure levels allow for Controlled Withdrawal™ whereas the additional anchoring pressure level can be used for anchoring during treatments. Permanent leak testing ensures full endoscope integrity throughout the procedure. Material as well as detergent compatibility was certified with all established AER and detergent manufacturers.



Product Specifications

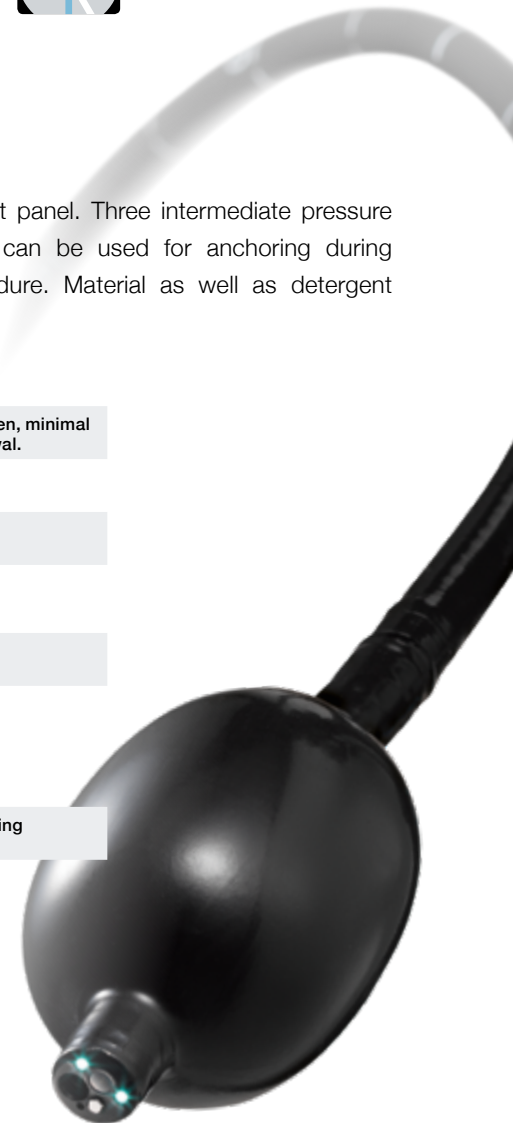
Controlled Withdrawal™ pressure	Optical system centers in the lumen, minimal deflection during steady withdrawal.
Endoscope Model	G-EYE® 760R-VM / VI / VL (3 sizes)
Compatible Processor / Light Source	ELUXEO™ VP / BL-7000 ELUXEO™ Lite EP-6000

SPARK²C Equipment

Inflation System	3 intermediate pressure levels 1 anchoring pressure level
Control and Foot Panel	For simple operation

Leak Tester

Hand-held Leak Tester	For additional automatic leak testing prior to AER
-----------------------	--



For more information please contact info@treier.com



DUOMED

Duomed Swiss AG
Grenzstrasse 5a, 6214 Schenkon
Tel. +41 (0)41 510 07 00
www.duomed.com

Manufactured by



Smart Medical Systems Ltd.

5 Hanofar St.
4366404, Ra'anana, Israel
www.smartmedsys.com

**G-EYE® is a brand owned by
SMART Medical Systems.**

Distributed by



FUJIFILM Europe GmbH

Heesenstr. 31, 40549 Düsseldorf, Germany
Tel.: +49 211-50 89 0, Fax: +49 211-50 89 8700
www.fujifilm.eu, endoscopy_eu@fujifilm.com