






DUOMED

DiLumen[®] EZ Glide Endoluminal Interventional Platform (EIP)

with EZ *Glide* hydrophilic coating



-  Superior navigation.
-  Enhanced visualization.
-  Stability & control.

Pioneering endosurgery, manufactured by

 LUMENDI

Putting more possibilities for endosurgery within your reach.



Superior navigation.

- **Inflatable two-balloon design** stabilizes the endoscope and the nearby anatomy.
- **Intraoperative conduit** enables safe and efficient access, and repeated removal of tools and tissue, without losing position.



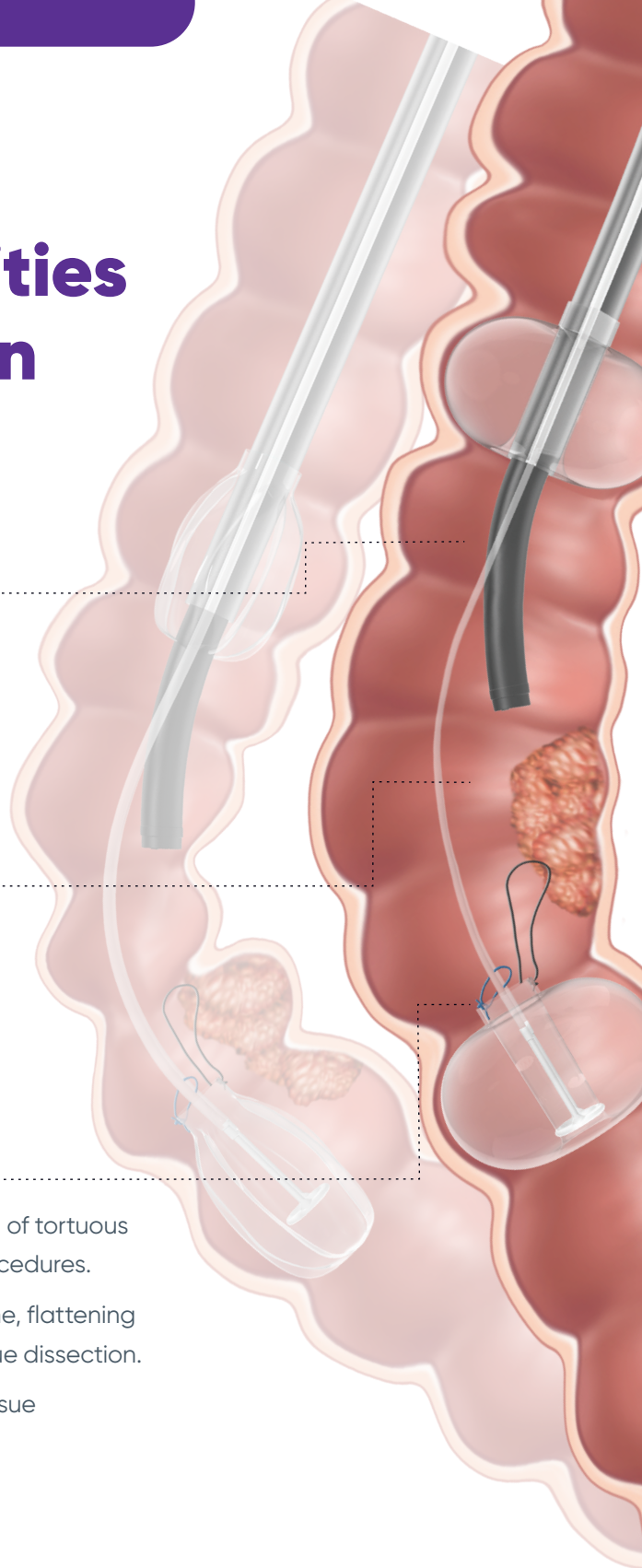
Enhanced visualization.

- **Aft balloon** supplies gentle endoluminal positioning, helping to reveal tissue planes and expose hidden polyps within folds and flexures.
- **EZ Glide hydrophilic coating** provides a clearer, more visible therapeutic zone without messy lubricants.



Stability & control.

- **Colon shortening** allows for safe and gentle straightening of tortuous anatomy, achieving faster access and fewer aborted procedures.
- **Extendable fore balloon** creates a stable therapeutic zone, flattening the surgical site for submucosal injection and precise tissue dissection.
- **Integrated suture system** supplies controlled, dynamic tissue manipulation and tension during procedures.



**Endoscopic
Mucosal
Resection (EMR)**

**Endoscopic
Submucosal
Dissection (ESD)**

**Complex
Polypectomies**

**Challenging
Colonoscopies**

Achieve significant time savings with DiLumen.

Superior intraoperative control. Improved endoscopic stabilization.

DiLumen helps gastroenterologists and colorectal surgeons achieve enhanced efficiency, speed, and safety—by minimizing risk and recovery for patients otherwise destined for hemicolectomy.

See the results at lumendi.com/dilumensavestime.

49.0%

increased ESD speed¹

49.5%

decreased ESD time reduction in total²

97%

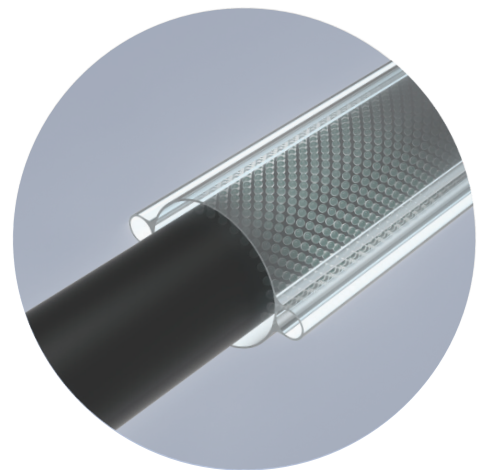
en bloc resection (vs 86% control group)¹

36.5%

reduction in total procedure time³

EZ Glide

Lumendi's proprietary EZ Glide hydrophilic coating creates a self-lubricating layer between the sheath and endoscope, making navigating the colon anatomy quicker and easier.



” DiLumen EZ Glide significantly improved our ability to remove four cecal polyps in a recent case.

Dr. Stuart Gordon
Dartmouth-Hitchcock Medical Center
Lebanon, NH

” Stability is perfect! Maneuverability with Dilumen EZ Glide is great and the conduit function facilitates easy re-access to the right colon.

Prof. Dr. Peter Bauerfeind,
Städtspital Triemli,
Zürich, CH

Product codes & descriptions

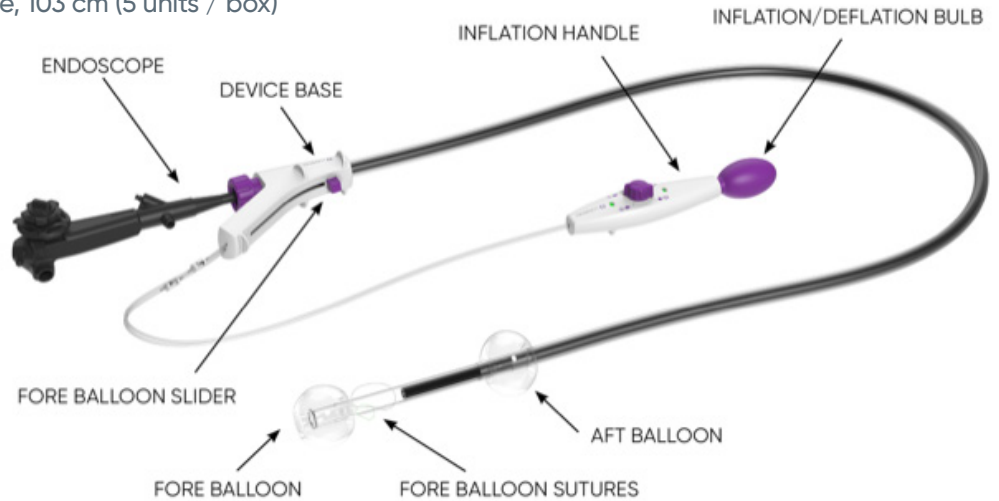
DiLumen® Endoluminal Interventional Platform (EIP)

D-1001: DiLumen EIP with EZ Glide, 130 cm (1 unit / box)

D-1002: DiLumen EIP with EZ Glide, 103 cm (1 unit / box)

D-1001-5: DiLumen EIP with EZ Glide, 130 cm (5 units / box)

D-1002-5: DiLumen EIP with EZ Glide, 103 cm (5 units / box)



”DiLumen EZ Glide provides me with effective and efficient access, which is why it is an essential ESD tool for me.

Dr. Alexander Schlachterman
Thomas Jefferson University Hospital
Philadelphia, PA

”Without DiLumen this procedure could not have been done endoscopically. (Referring to the difficult accessibility of a lesion)

Amyr Hajji, Consultant Colorectal & Laparoscopic Surgeon, King's College Hospital, London, UK

Pioneering endosurgery.

Since 2017, Lumendi has worked with Gastroenterologists and Colorectal Surgeons to put more control in clinicians' hands. We continue to enhance the DiLumen platform to enable GI- and Surgery professionals to perform complex polypectomies with faster, less invasive endoluminal procedures as an alternative to laparoscopic or open surgery.

¹ Kantsevov, SV. A randomized prospective study evaluating effectiveness of a double balloon endoluminal platform for colorectal endoscopic submucosal dissection. *Am J Gastroenterol* 2020;115:S467. doi: 10.14309/01.ajg.0000705672.42930.99.

² Stavropoulos SN, Modayil R, et al. Use of the DiLumen double balloon endoscopic platform in complex colon esd results in faster ESD and faster endoscopic suturing device insertion for sutured defect. *Gastrointest Endosc* 2019;89(6)(suppl):AB651-AB652. doi:10.1016/j.gie.2019.03.1144.

³ Kantsevov SV, Tuluvath PJ, et al. New double balloon interventional platform significantly reduces time of endoscopic submucosal dissection: Case control study of 86 patients with large sessile colonic lesions. *Gastrointest Endosc* 2019;89(6)(suppl): AB651. doi: 10.1016/j.gie.2019.03.1143.

DISTRIBUTED BY



Duomed UK • One Embankment • Neville Street • Leeds LS1 4DW
T (+44) 113 513 4870 • info.uk@duomed.com • www.duomed.com