

D²RS

DIGITAL DYNAMIC REMOTE SYSTEM



NEW
GENERATION



STEPHANIX
MEDICAL IMAGING SOLUTIONS



BVCert. 6182197

D²RS INTEGRATES THE WHOLE STEPHANIX EXPERTISE: EASE OF USE, ERGONOMICS AND EFFICIENCY.

- ▶ Unmatched patient coverage, true rear access, patient's weight up to 310 kg.
- ▶ Compact high-end system integrating electronic components directly into the table.
- ▶ Automated patient workflow via code mapping and intuitive user interface.
- ▶ Outstanding image quality with low dose thanks to digital systems with dynamic flat panel detectors.
- ▶ Advanced optional applications such as automatic stitching, DSA, tomosynthesis.
- ▶ Powerful and ergonomic DICOM compliant workstations.

"ORIGINE FRANCE GARANTIE" CERTIFICATION

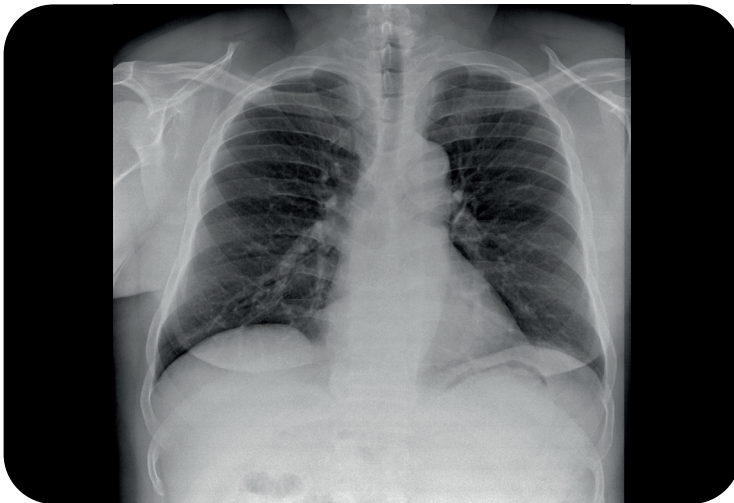


BVCert. 6182197

STEPHANIX,

French leader in medical imaging, is the first company in its category to obtain the label "Origine France Garantie" certified by Bureau Veritas for its D²RS remote controlled table.

This seal sets our product traceability and certifies the French origin of D²RS.



RADIOGRAPHY

Anatomical protocols ensure high image quality for all patient profiles and types of exams.



FLUOROSCOPY

The **D²RS** high-end dynamic detector supports all fluoroscopy exams with complete control of the acquisition rate, image quality and exposure dose.



TABLETOP EXAMS

The ability to perform tabletop examinations with **D²RS** guarantees great versatility, allowing you to work in an optimal configuration for pediatric examinations, extremities and also for exposures on stretchers or wheelchairs.

D²RS

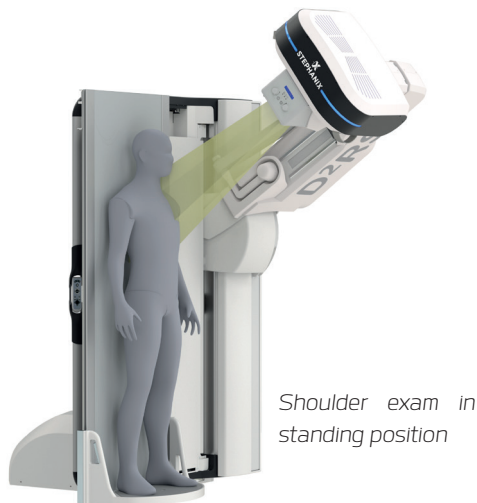
DIGITAL DYNAMIC REMOTE SYSTEM

UNMATCHED PATIENT COVERAGE

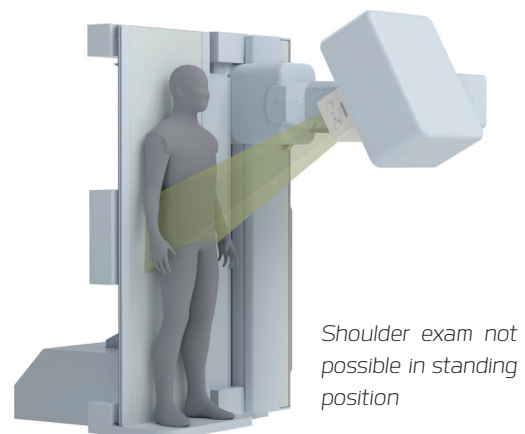
› COLUMN ANGULATION

The tube holder column offers a full angle of $\pm 40^\circ$. With tabletop movements, it becomes easy to do exams requiring oblique rays, even at the end of the table, without moving the patient.

› D²RS WITH COLUMN ANGULATION



› COMPETITORS REMOTE CONTROLLED TABLE WITHOUT COLUMN ANGULATION



› CARRIAGE

The longitudinal movement of the column / detector assembly allows complete patient coverage and ensures high versatility in vertical or horizontal position.





» LONGITUDINAL MOVEMENT

The longitudinal and lateral movements of the tabletop with the column angulation and the carriage, enable complete x-ray coverage of the entire tabletop. Thus, once positioned, no need to move the patient.

TRUE REAR ACCESS

Smart access: the 120cm extension of the tabletop is a true rear access for operators. The flat tabletop enables the patient transfer from the stretcher to the table effortlessly.



STURDINESS

D²RS has no limitation of movements up to 230 kg and 310 kg for patients lying still in horizontal position.



► TABLE FOOTREST

The motorised movement of the tabletop, together with the attached footrest and the tubestand, allows effortless positioning such as weight-bearing knees or feet.



SOURCE IMAGE DISTANCE

D²RS Source Image Distance is continuously adjustable from 110 to 180 cm. An ideal feature for thorax examinations.



TUBE ROTATION

D²RS tube rotation offers even more versatility for maximum ergonomics.



MINIMUM HEIGHT

D²RS variable height makes easier the access for disabled patients.



MAXIMUM HEIGHT

The table height is adjustable to the working position, for the user, for patient access and for stretcher transfer.



TILTING

D²RS quickly tilts from the horizontal position to the vertical position.



TRENDELENBURG

D²RS in Trendelenburg position makes numerous exams possible.

D²RS

DIGITAL DYNAMIC REMOTE SYSTEM

A new design, new branding,
new status LEDs, a new console.

SECOND MAIN MONITOR 

SECOND « LIVE » MONITOR * 

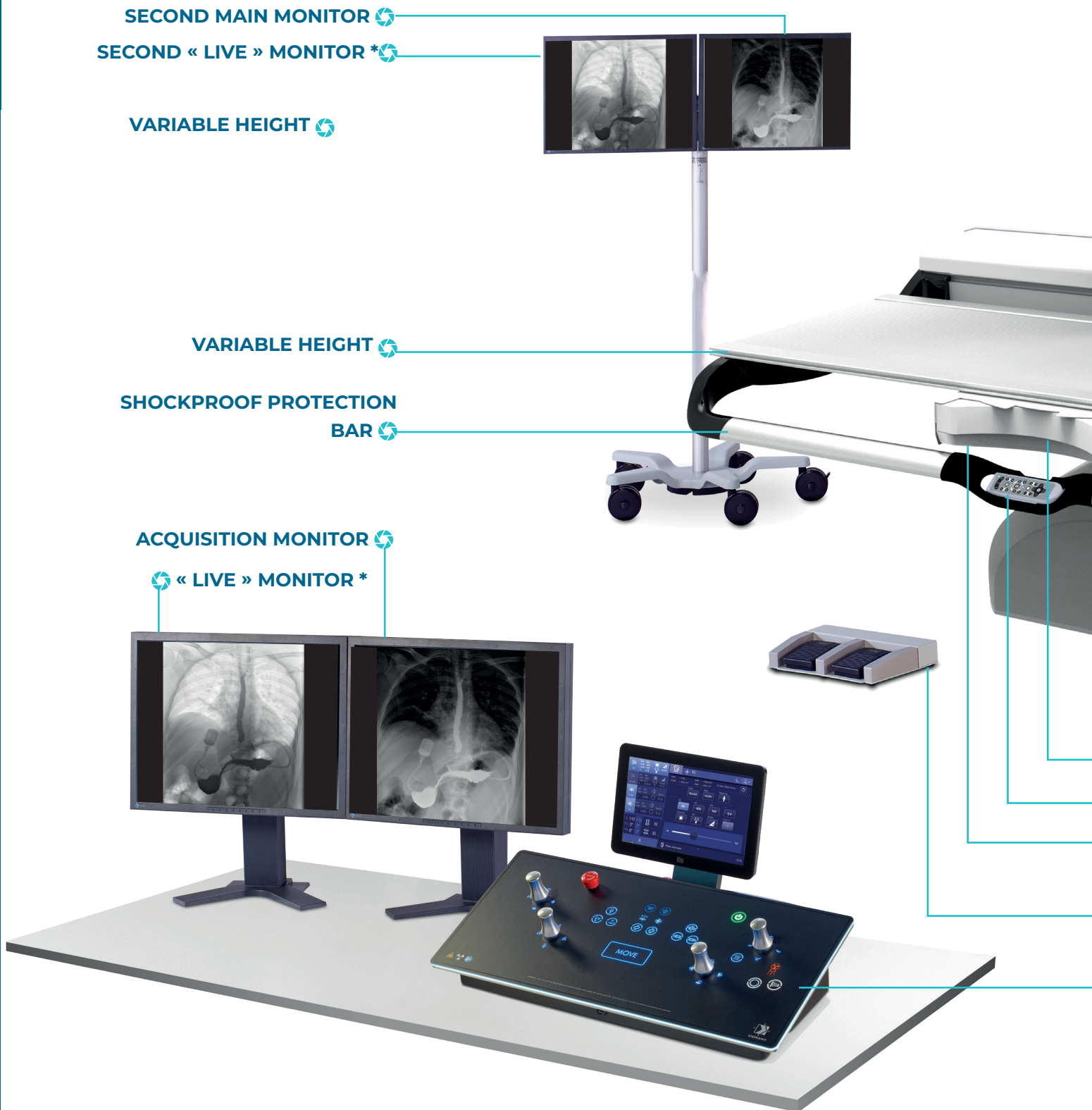
VARIABLE HEIGHT 

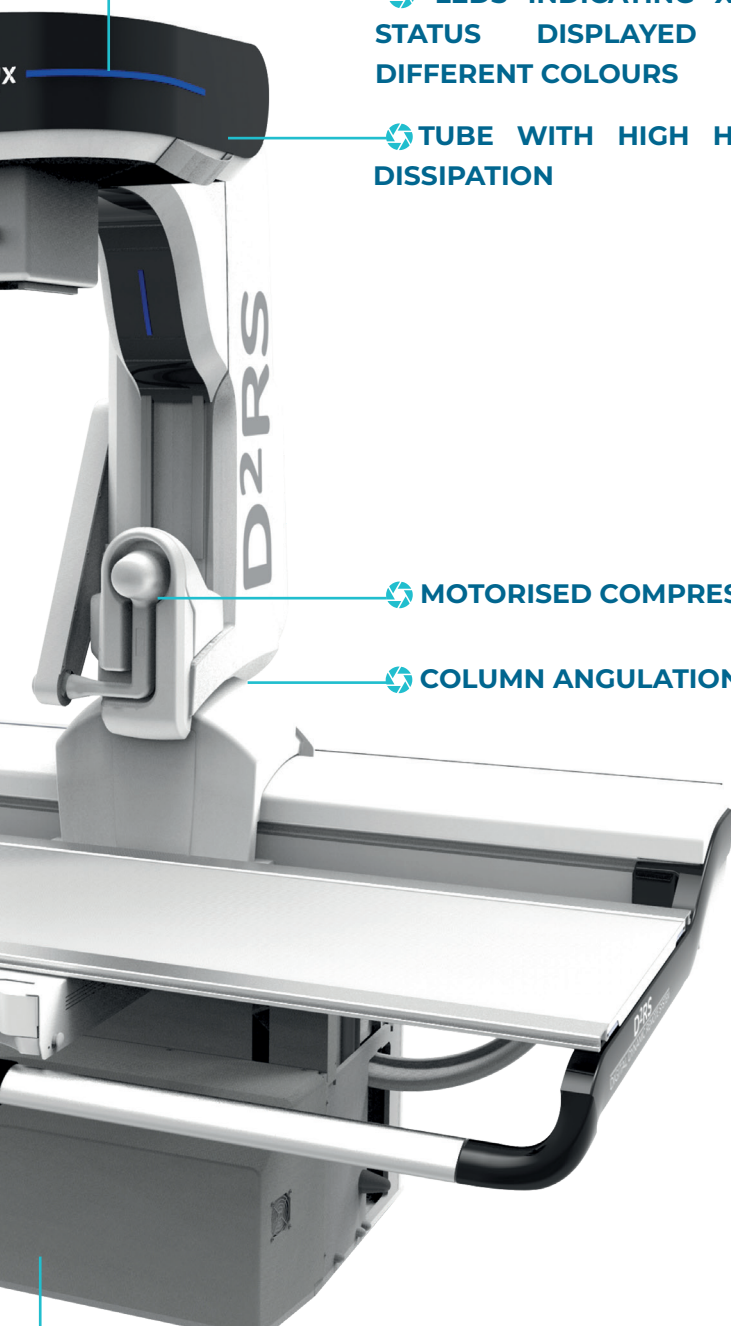
VARIABLE HEIGHT 

SHOCKPROOF PROTECTION
BAR 

ACQUISITION MONITOR 

« LIVE » MONITOR *





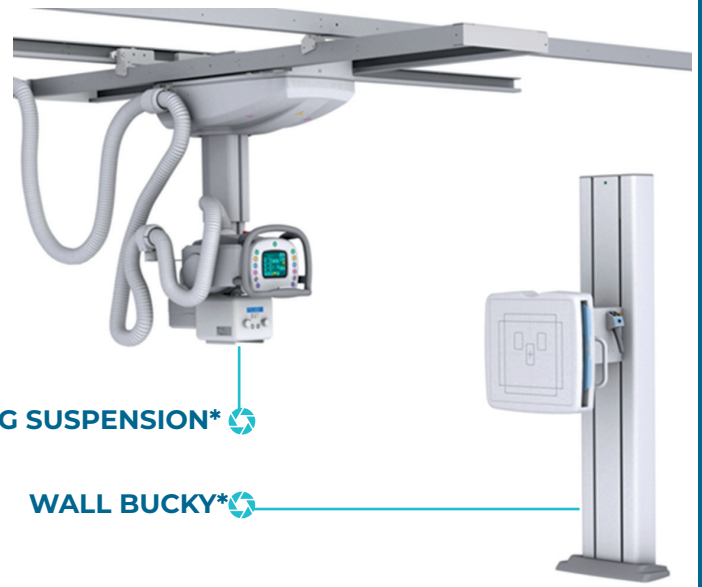
TUBEHEAD WITHOUT ANY VISIBLE CABLE

LEDS INDICATING XRAY STATUS DISPLAYED BY DIFFERENT COLOURS

TUBE WITH HIGH HEAT DISSIPATION

MOTORISED COMPRESSION*

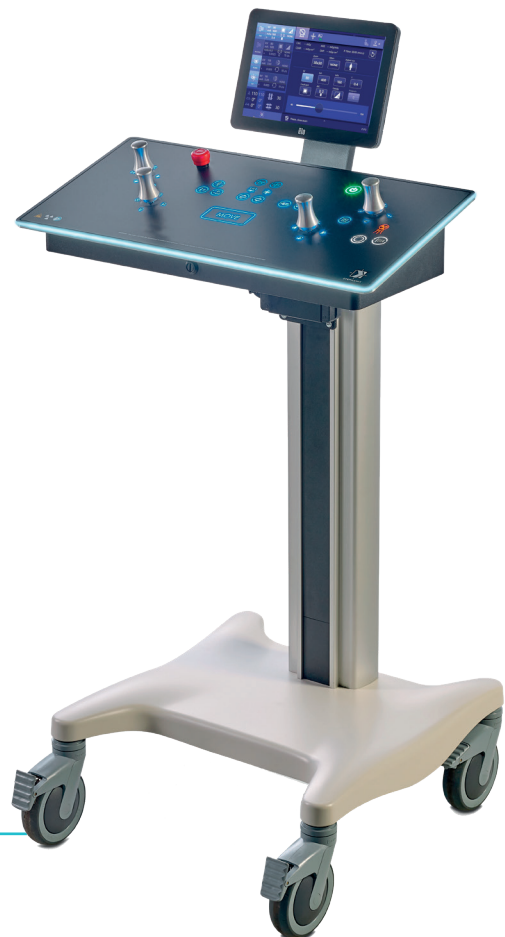
COLUMN ANGULATION



CEILING SUSPENSION*

WALL BUCKY*

- SMALL FOOT PRINT : ALL ELECTRONICS ARE INTEGRATED IN THE BASE
- DYNAMIC DETECTOR
- MAGNETIC WIRELESS REMOTE CONTROL
- REMOVABLE GRID COMPATIBLE WITH DIFFERENT FOCAL DISTANCES
- IN-ROOM FOOT PEDALS
- CONTROL CONSOLE
- IN-ROOM CONTROL CONSOLE *



* OPTION

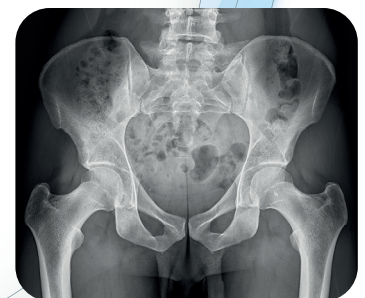
AUTOMATION BY PROTOCOL

The "MOVE" button activates high number of automations, based on anatomical protocols from the acquisition console.

AUTOMATIC FILTRATION

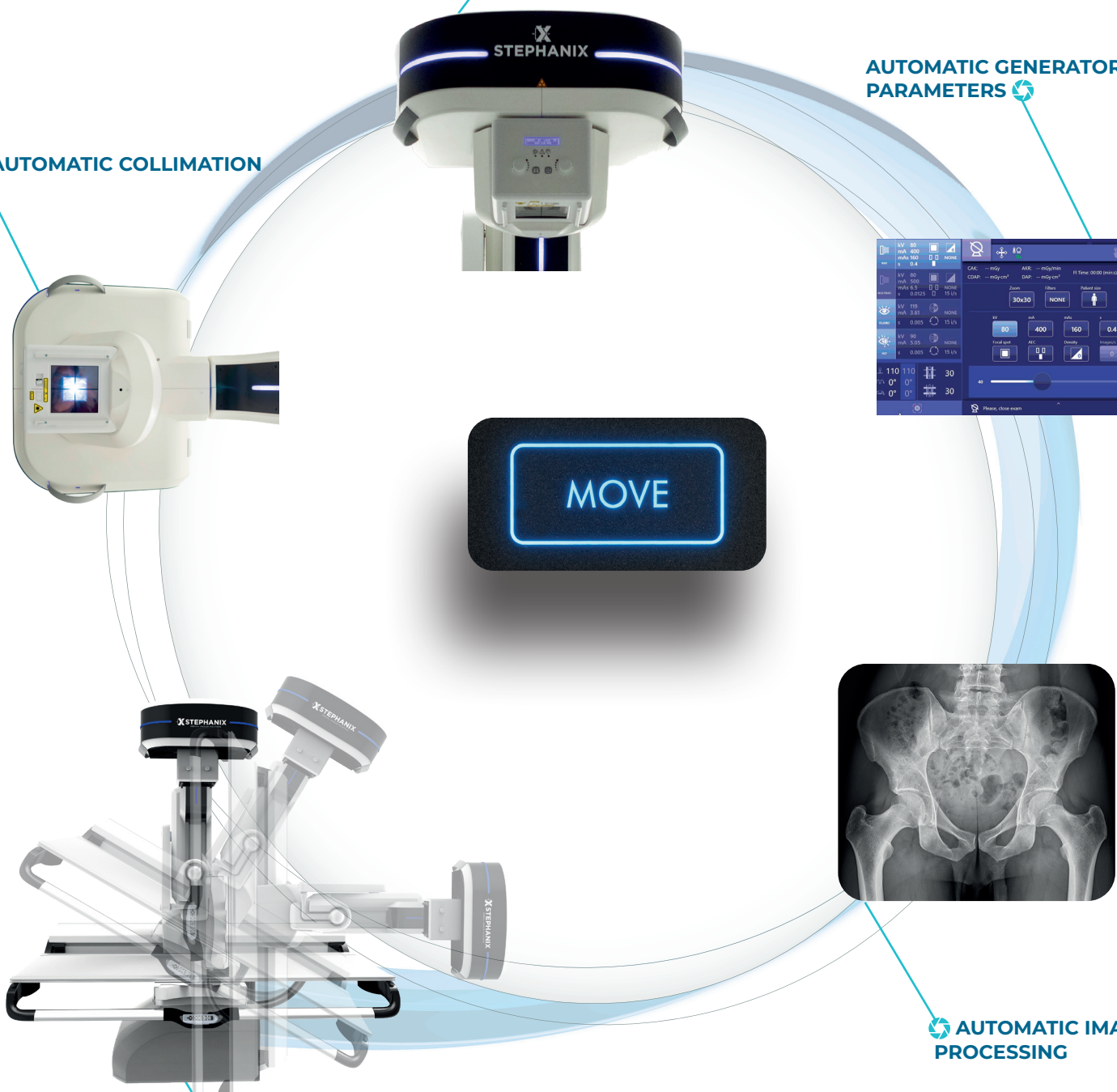
AUTOMATIC GENERATOR PARAMETERS

AUTOMATIC COLLIMATION



AUTOMATIC IMAGE PROCESSING

AUTOMATIC TABLE POSITIONING



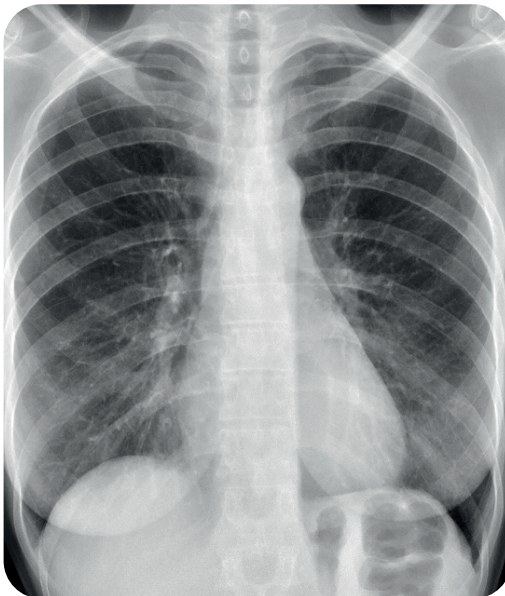
INTUITIVE INTERFACE

► TABLE CONSOLE

Design and ergonomics of **D²RS** control console has been re-engineered. Based on capacitive technology, push buttons and control joysticks only react when in contact with a human operation, thus avoiding any involuntary movement.

A new feature keeps all the preprogrammed parameters (except tilting) in order to quickly adapt the positioning of the table to patient's status (standing or lying).

From its touchscreen, you have access to all information: positioning of the table, video camera for positioning, magnification modes in fluoroscopy, generator parameters, etc..



► ACQUISITION CONSOLE

Definitely ergonomic, the acquisition console is fully integrated into the IT system dedicated to radiology. Its interface manages the entire system. The automation of table movements, collimation, additional filtrations, generator parameters and image processing are driven from the anatomical protocols.

► WIRELESS REMOTE CONTROL

The ergonomics of our remote control have been re-engineered to improve the use and access of different buttons.

The wireless remote includes all controls, as well as the autopositioning button to move the table.

Magnetic, it easily fits into the holder located at the center of the table. It can also be used as a secondary control console.



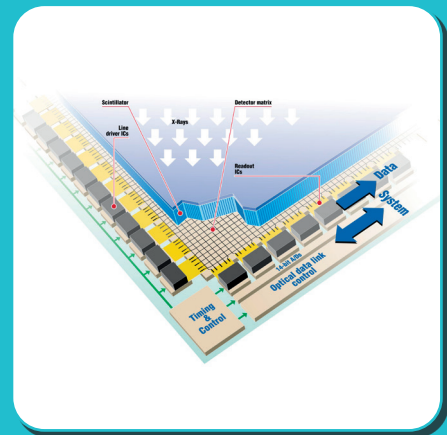
IMAGE QUALITY / DOSE RATIO



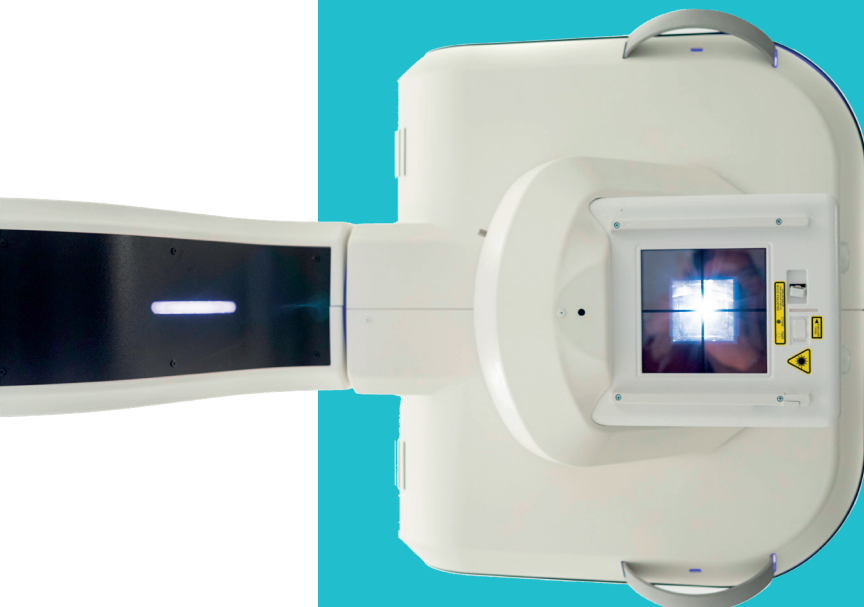
› ANATOMICAL PROTOCOLS



› REMOVABLE GRID



› LATEST GENERATION
DYNAMIC FLAT PANEL DETECTOR



› DOSE REDUCTION

D²RS is designed to provide the best image quality / dose for each exam in radiography or fluoroscopy.

This performance is possible thanks to the very high-end dynamic detector combined with a powerful image processing software. In addition, dedicated mechanical characteristics such as very small Tabletop/ Detector distance, video camera to confirm position, automatic additional filtration, also help reducing dose.

DX MODALITY



WORKLIST
MPPS/SR



RIS

IHE
PROFILE



IHE

Information
Systems

STORE



PACS
Archiving



STORE



Diagnosis
console



STORE



Post-
processing
console



PRINT



DICOM
printers
(film or paper)



DICOM

IT ARCHITECTURE GIVEN AS AN EXAMPLE

› ADDITIONAL CONSOLE

In order to free up the acquisition console for even greater workflow, it is possible to link an optional multi-modality console.

This DICOM compliant console allows to manage image processing, annotations, measurements, printing or external media export without burdening the acquisition console.

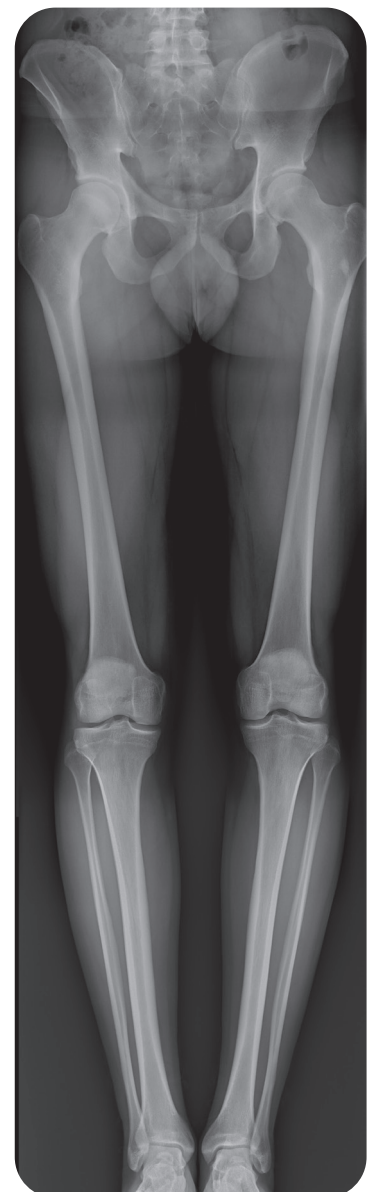




AUTOMATIC IMAGE STITCHING

D²RS remote controlled table allows full spine and long leg studies.

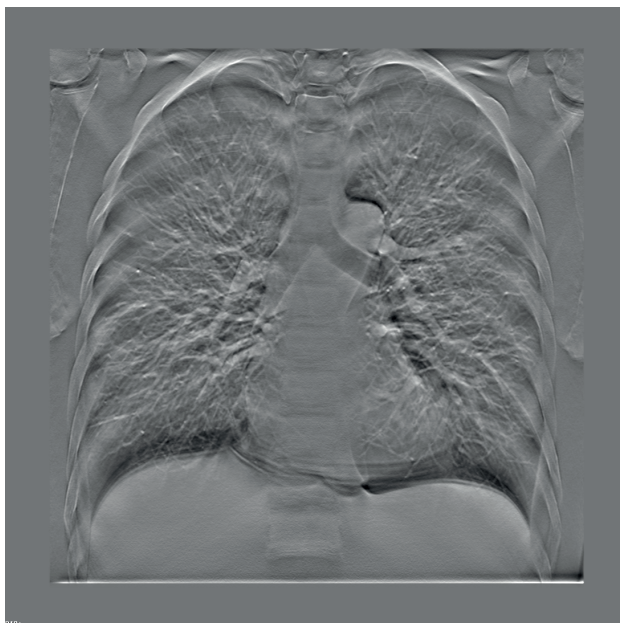
- ▶ Tube and detector automatic positioning
- ▶ Over 1.5 meters possible stitching
- ▶ Acquisition in vertical or horizontal position
- ▶ Automatic image stitching



DSA

Advanced angiography module is available on **D²RS**.

Ultra-versatile solution on Flat Panel Detector with many features such as roadmapping, automatic programming of injection phases, landmarking, pixel shift, etc.



TOMOSYNTHESIS

Advanced application for the reconstruction of a 3D volume from a multi-slice acquisition, **D²RS** tomosynthesis is a powerful diagnostic tool.

The column angulation, together with the wide range of post-processings, offer great flexibility in acquisition. It gives access to all kinds of examinations, from the pelvis to the extremities, from lungs to sinuses.

