

Single-Use **SUV-2A-B** 

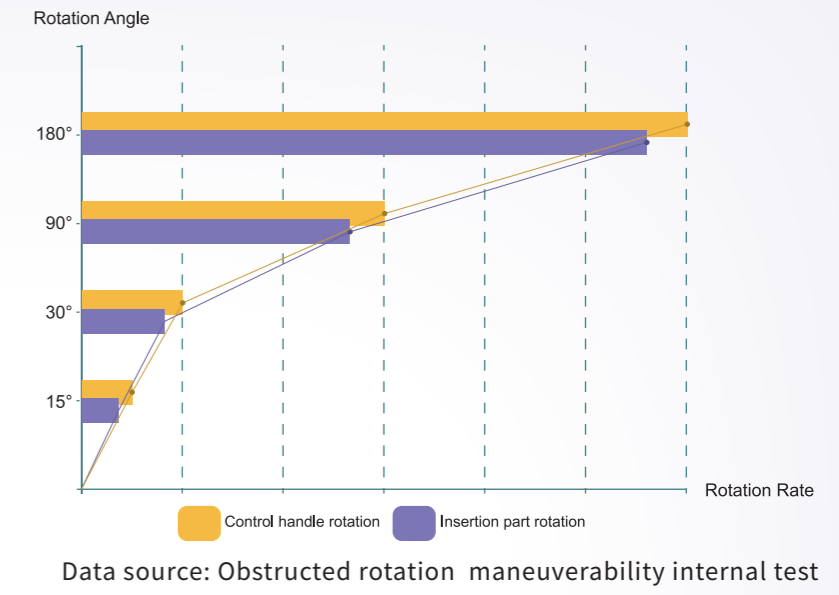
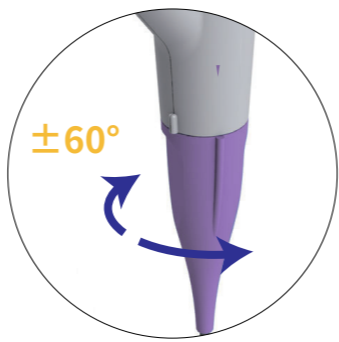
Urology Videoscope

Ingenuity and Insight

Excellent maneuverability ensures that the operation is on effective. Even with instruments in working channel, it can be manipulated at will.

Working Channel:
3.6Fr(Φ1.2mm)

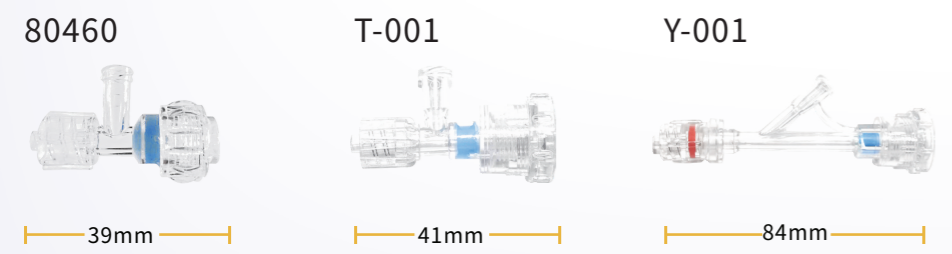
More Precise
The maximum $\pm 60^\circ$ rotation function allows the operator to change the shaft's angle by rotating. This enables more user precision and comfort.



The rotation function

at the top of the device allows the operator to manage the operation in a standing or sitting position.

Optional:



Three different type of irrigation valve satisfy different using habit, ensuring a safe fit for laser fibers and reducing leakages.

Deflection 285° UP/DOWN

Deflection capabilities of 285° up and down allow for optimal visualization throughout the whole urological tract.

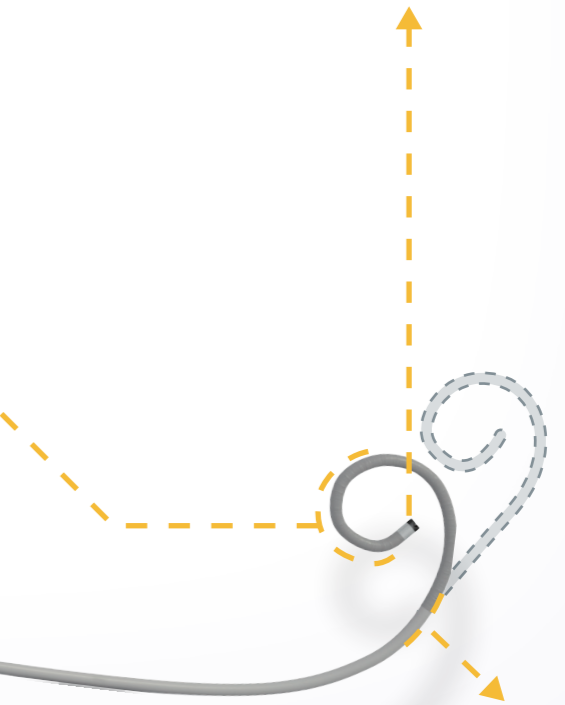
Field of View: 120°
Wider field of view of 120° gives the operator a better visual experience.

The uniform outer diameter 8.4Fr(Φ2.8mm)

Slim,pliable and tough insertion core to help operator navigate smoothly in urethra and kidney, ensuring sufficient irrigation flow.

Excellent passive bending

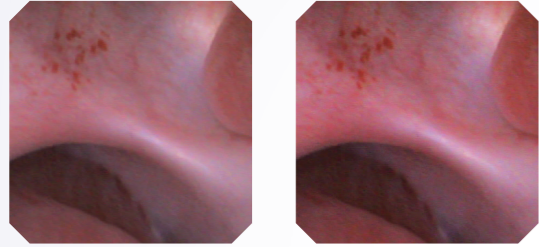
Effectively reach the lower calyces.



Powerful Chip Processing

See Better

Improve image contrast

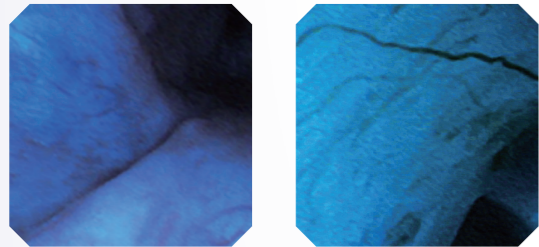


Gain off

Gain on

White Balance

Edge structure and capillary emphasis, better identify upper tract tumors due to improved visibility of vessel structures.



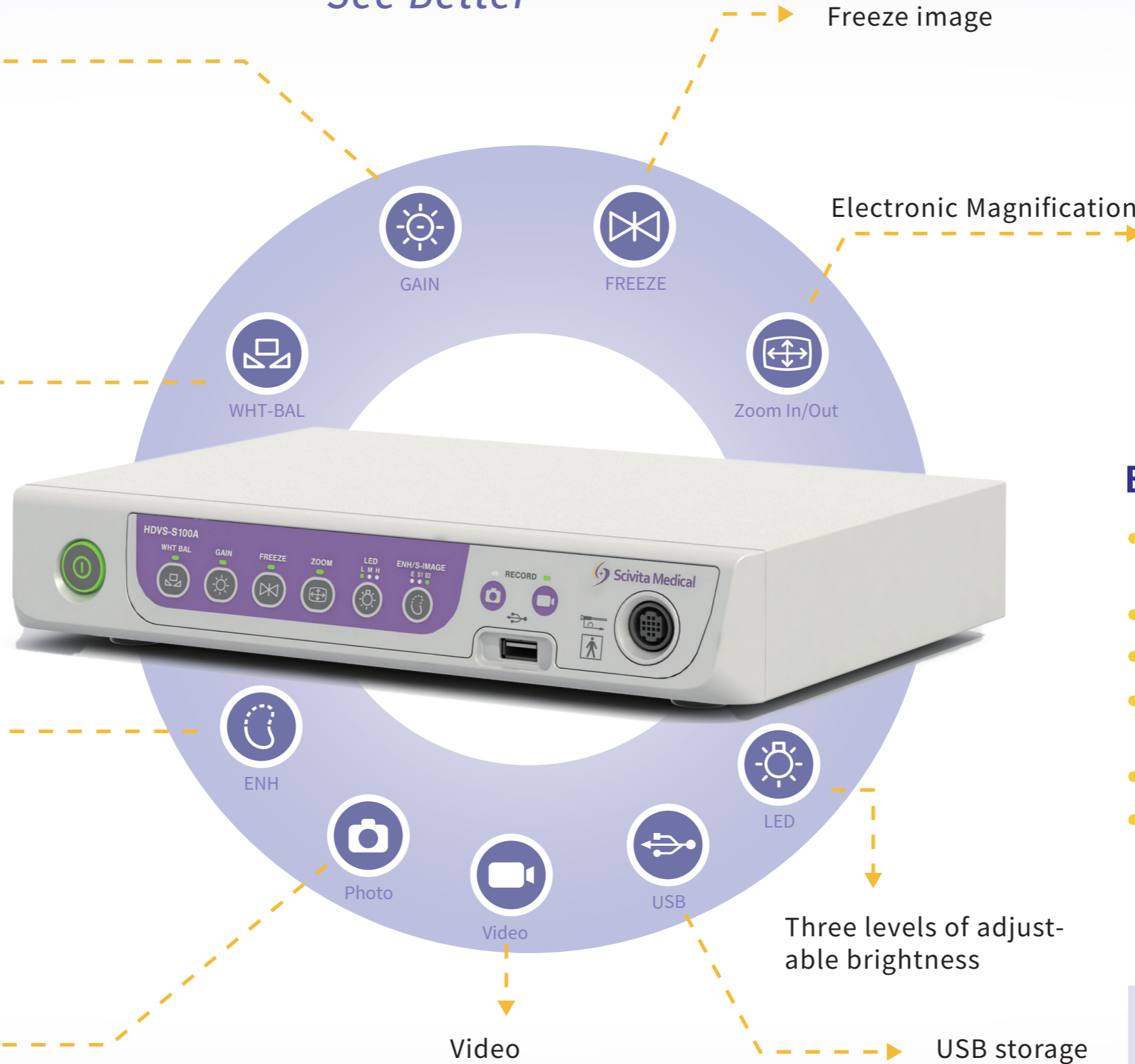
S1

S2

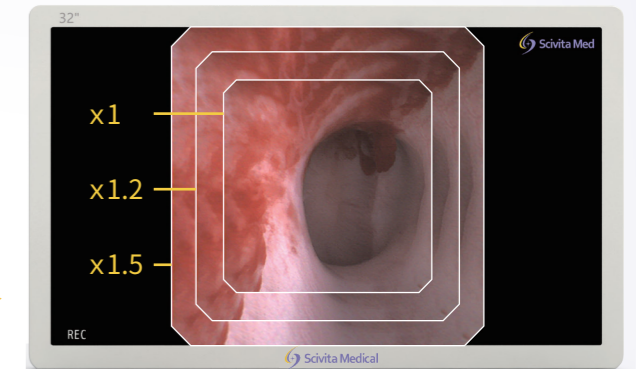
Photo

Video

USB storage



Scivita brings a brand-new and higher-resolution digital image without distortion, even on a **32-inch** monitor.



The processor compatible with various monitors. 32-inch monitor is highly recommended.

Be ready at any time

- Plug and play. Off the shelf ready. Consistency every time.
- You decide which hand drives.
- Avoid cross-infection.
- Save on sterilize and maintenance costs.
- Eradicate unnecessary repair bills.
- Save time post procedure, no need for scope integrity testing.

Scivita Medical always committed to envirometal protection, we have purposely make the package. Packing to be easily recycled.

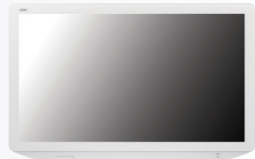


Other Product Lines

Luminist 4K

4K Urtal HD Endoscope System

4K Monitor



4K Camera Head



ENDOCAM 4K



4K Ultra Telescopes



Light Source LED



3D PyroView

3D Visualization System

Foot Switch



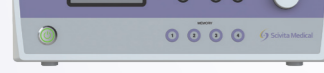
3D Recorder



3D Monitor



3D Visualization System



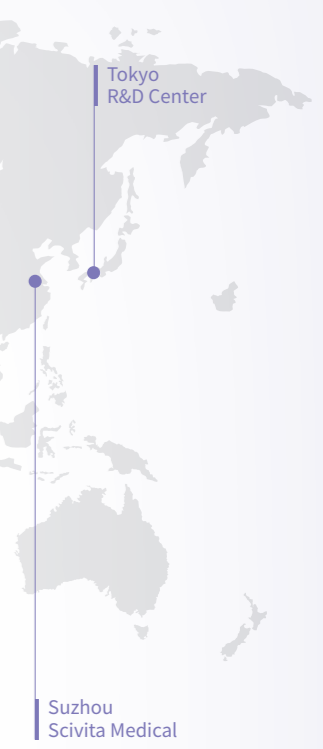
Auto-stereoscopic 3D Display



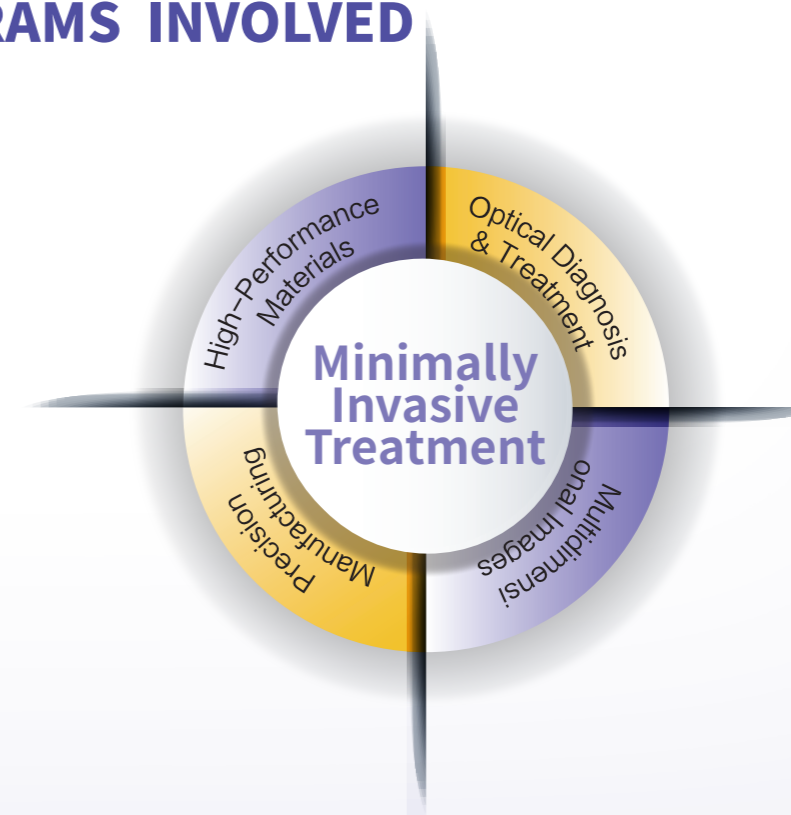
COMPANY PROFILE

Founded in 2016, Scivita Medical is a medical device company that provides minimally invasive diagnosis and treatment solutions, and focuses on the research, development and commercialization of medical endoscopes and related products. Scivita Medical takes 'Based in China, Faces the World' as its core strategy and has established R&D centers both in China and Japan. With solid in-house R&D capabilities, Scivita Medical has established a unique technology platform built upon five synergistic core technologies, and built a comprehensive portfolio of endoscope products and products candidates covering all types of endoscope procedures conducted by the various clinical departments, to address diverse medical needs. Adhering its value of 'Clinical Focus' 'Collaborative Innovation' 'People Oriented' 'High Performance', Scivita Medical will continuously upgrade its core technologies, improve market penetration with excellent products, and to be the preferred brand trusted by doctors and patients around the world.

Scivita Medical is a high-tech enterprise engaged in the field of optical diagnosis & treatment, multidimensional images development, high-performance materials research and precision manufacturing within minimally invasive medical treatment. Scivita Medical owns intellectual property rights and independent brand products. Scivita Medical strives to cooperate with relevant universities and enterprises from Europe, the United States and Japan, to continuously deliver State-of-the-art minimally invasive devices to the world.

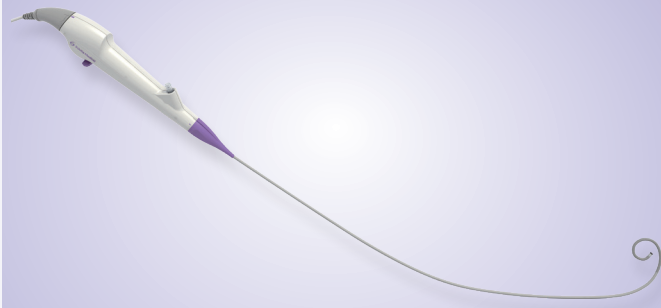


PROGRAMS INVOLVED



SPECIFICATION

SUV-2A-B



Mould	SUV-2A-B
Outer Diameter of Insertion Section	8.4 Fr(Φ2.8mm)
Outer Diameter of distal End	7.8 Fr
Weight	200g
Working Length	680mm
Total Length	990mm
Working Channel (ID)	3.6 Fr(Φ1.2mm)
Field of View	120°
Depth of Field	0.5-120mm
Angulation Range	285° Up/Down


SPECIFICATION

PROCESSOR



Mould	HDVS-S100A
Size	300mm x 225mm X 57mm
Weight	2.5 Kg
Power Supply Requirement	100-240V
Output	DVI*1、SDI*2
Interface	Foot Switch and USB

ACCESSORIES(OPTIONAL):

Irrigation Valve	80460	39mm
		
	T-001	41mm
		
	Y-001	84mm
		
Foot Pedal	KF2 1S-MED GP25	
		

The product information is for reference only, please refer to the packaging instruction and operating instruction provided with this product for complete indications for use, contraindications, warnings, precautions, adverse events, and instructions prior to using this product.

This product should be used by properly licensed medical professionals, the medical professional must use their professional judgment in making any final determinations in product usage and technique.

The technical information of this product may be changed or updated in the future, please refer to the product information published on Scivita's official website.

Please note that the described products may not be available yet in all countries due to regulatory requirements.



Duomed Swiss AG

Grenzstrasse 5a, 6214 Schenkon

Tel. +41 (0)41 510 07 00

www.duomed.com

SCIVITA MEDICAL TECHNOLOGY CO.LTD.

+86-512-8187 7788

www.scivitamedical.com

info@scivitamedical.com

NO.8, ZHONG TIAN XIANG, SUZHOU

INDUSTRIAL

PARK, SUZHOU, JIANGSU PROVINCE,

P.R.CHINA, 215000



www.scivitamedical.com

 **Scivita Medical**