



DUOMED

Duomed Swiss AG
Grenzstrasse 5a, 6214 Schenkon
Tel. +41 (0)41 510 07 00
www.duomed.com



spirit of excellence

become
more visible



System blue

The "blue" Standard
for Photodynamic Diagnostics (PDD)

System blue

The "blue" Standard for Photodynamic Diagnostics (PDD)

Early identification is the top priority for treatment of bladder tumors. This is why our systems for Photodynamic Diagnostics (PDD) have been contributing to make this as simple and safe as possible for more than 20 years.

PDD development has reached new heights thanks to **System blue**! Discover the "blue" standard which will help you make the invisible visible.



PDD with Richard Wolf – everything from a single source

The **System blue** complete system for the treatment of bladder tumors consists of the following components:

- **ENDOLIGHT LED blue:** LED-based PDD light source offers maximum color contrast for clear differentiation of tumors, without overexposing the tissue
- **Autoclavable Special Fiber Light Cable:** Unique for fluorescence applications – can also be used as a standard light cable
- **ENDOCAM Logic 4K:** High-resolution camera control unit with two different PDD modes: **bluePDD** and **bluePDD Color Contrast**
- **PENDUAL blue HD:** Flexible camera head which can be articulated to suit individual hand positions during cystoscopies and TUR-B
- **PANOVIEW Telescopes blue:** Improved light transmission and longer service life thanks to special fiber design

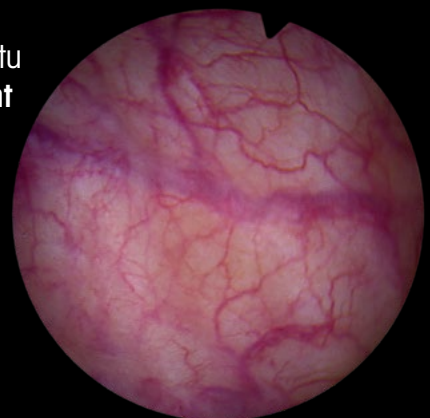


become

more visible

Bladder carcinomas can be easily overlooked using conventional cystoscopy on account of their superficial growth or their minimal expansion.

Carcinoma in situ
under **white light**



System blue

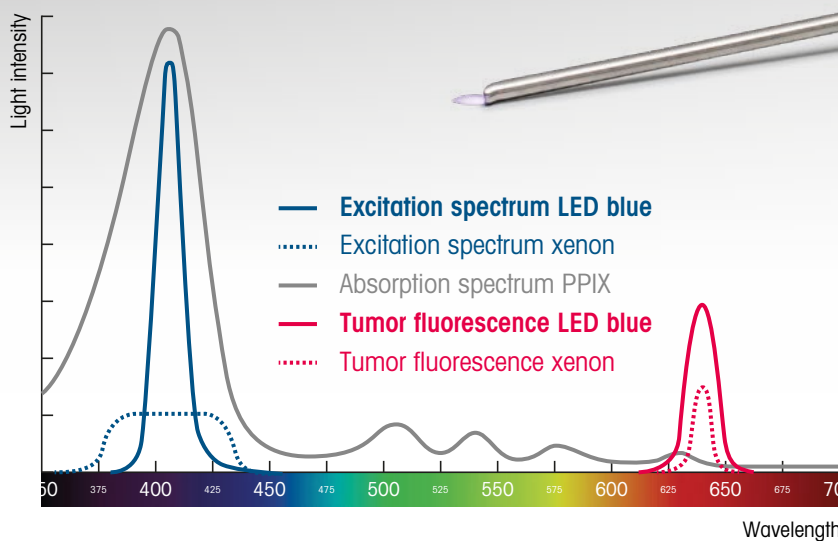
Visible progress thanks to LED technology

ENDOLIGHT LED blue – LED-based PDD light source.

The emission spectrum is tuned optimally to the absorption band of the photosensitizer used for PDD. This generally results in a much stronger tumor fluorescence than that obtained with xenon light sources.

This not only significantly improves contrast imaging and the differentiation between malignant and benign tissue, but also provides a fundamentally brighter and more natural image of the surgical site.

- Faster detection of tumors due to high color contrast
- No delay in image transmission thanks to the high-speed image processor
- Narrow-band blue LED light prevents overexposure of the tissue
- Special cooling system enables virtually silent operation



The comparison with xenon technology demonstrates that the emission band of **LED blue** is optimally correlated with the main absorption band of the photosensitizer based on PPIX (protoporphyrin IX). This leads to much stronger tumor fluorescence.





You will find user opinions and other information on our website:

systemblue.richard-wolf.com



„The HD image enables tumors to be easily differentiated even in white-light mode – the different blue PDD modes also allow outstanding distinction and contrast differentiation. In summary, I can say that this represents a substantial improvement over anything we have experienced up to now.“

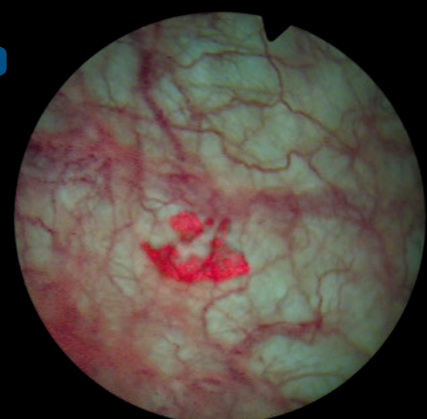
*Dr. med. Michael Straub // Senior Urologist
Head of Endourology and Stone Center
University Hospital Klinikum rechts der Isar
Department of Urology Technical University
Munich, Germany*

become

more visible

In blue PDD mode, the color of tumorous tissue becomes significantly more differentiated than the healthy surrounding tissue. The healthy section of the bladder wall is shown as light and contrast-rich and this permits an outstanding overview.

bluePDD



System blue

Unique components for an innovative system



„The great aspect of System blue is the strong image illumination: This allows me to operate continuously in PDD mode and achieve complete resection of all tumors with a high level of clinical certainty.“

*Dr. med. Gerson Lüdecke // Senior Urologist
Head of the Section of Uro-Oncology / Med. Tumor Therapy
Clinic and Polyclinic for Urology, Pediatric Urology and An-
drology, Giessen, Germany*

ENDOCAM Logic 4K

With the latest software update, our high-resolution camera control unit is the first of its kind to offer two different PDD modes.

- **Two Special Imaging Modes (SIM) included for differentiated visualization: "bluePDD" and "bluePDD Color Contrast"**
- **Compatible with all applied parts and camera heads of ENDOCAM Logic HD**



Pendul blue HD camera head

- **Intuitive articulation between 0° and 90° for use as pendulum head for the resection**
- **1080 P full HD sensor resolution**
- **Bladder tumor resection can be carried out entirely under blue light**
- **Can also be used for white-light endoscopy without restrictions**

PANOVIEW telescopes blue

The special fiber design and a particularly fast lens system ensure crystal-clear images and a longer service life.

- **HD telescope** for a brilliant, bright image
- **Improved light transmission**
- **Longer service life**
- **Can also be used for white-light endoscopy without restrictions**
- **0° / 12° / 30° / 70°**



„From my own experience, I am able to report that treatment successes can be increased with every improvement in image quality and the resulting enhanced identifiability of tumorous tissue. This ultimately provides a considerable advantage for the patient.“

Shabrokh F. Shariat, M.D. // Head of Department of Urology MedUni Vienna, Austria

Adjunct Professor of Urology and Medical Oncology Weill Medical College of Cornell University / New York, USA

Adjunct Professor of Urology UT Southwestern / Dallas, USA



NEW: HF-Generator 2260

Perfectly tailored to monopolar and bipolar applications with the Richard Wolf instrument set.

- **Monopolar and bipolar presets**

Special Fiber Light Cable blue

Another innovation from Richard Wolf:

Our highly flexible PDD light cable can be autoclaved without any restrictions.

- **Autoclavable!** An innovation for fluorescence applications
- **Better transmission** through innovative fiber design
- **Highly flexible light cable**
- **Can also be used for white-light endoscopy without restrictions**

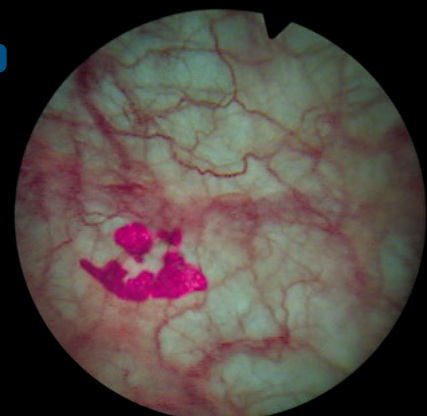


become

more visible

The blue PDD color contrast mode offers an even stronger differentiation which visualizes the fluorescence in vibrant magenta.

bluePDD
Color Contrast



Order data

System blue

Light source

ENDOLIGHT LED blue light source, bndl

comprising:

ENDOLIGHT LED blue light source (5165001), power cable (244003), patch cable, RJ45 (72325378), foot control rockerswitch (2030105) **51650011**

Spezial Fiber light cable blue, Set

Fiber light cable blue Ø 3.5 mm (80673523), Adapter endoscope side (809509) **806735231**

Telescopes

PANOVIEW telescope blue

Ø 4,0 mm

0° 8650.514
 12° 8654.531
 30° 8654.522
 70° 8650.515

Camera head

Pendul blue HD camera head

Angleable case for individual handling,

Integrated lens f = 17 mm

cable length: 3 m **5525833**



Camera

ENDOCAM Logic 4K camera controller, bndl

comprising:

ENDOCAM Logic 4K camera controller (5525301), manual remote control USB (5525401), power cable (244003), USB flash drive 32 GB (72321829), cable HDMI / HDMI lockable 3.0 m (103847) **55253011**



Order data

Recommended instrument combinations*
for use with **System blue**



TUR-B/monopolar SHARK continuous irrigation resectoscope
22/24 Fr., 30°, for monopolar resection of bladder tumors

Working element mono,
active, closed **8674205**
optional: Working element mono,
passive, closed **8674225**

Outer sheath, 24 Fr. 8675424

Internal sheath, 22 Fr. 8675322

Obturator, 22 Fr. 8673022

Viewing obturator, 22 Fr. 8673122

Spezial Fiber light cable blue, Set
2.3 m **806735231**

PANOVIEW telescope blue, 30° 8654.522
optional: PANOVIEW telescope blue, 12° 8654.531

Cutting electrode mono
22 Fr., 0.25 mm, 12°/30°, for single use,
single sterile packed (PACK=10 pcs.) **46782225**

Coag electrode mono
22 Fr., 12°/30°, for single use,
single sterile packed (PACK=5 pcs.)..... **46782201**



TUR-B/monopolar SHARK continuous irrigation resectoscope
24/26 Fr., 30°, for monopolar resection of bladder tumors

Working element mono,
active, closed **8674205**
optional: Working element mono,
passive, closed **8674225**

Outer sheath, 26 Fr. 8675426

Internal sheath, 24 Fr. 8675324

Obturator, 24 Fr. 8673024

Viewing obturator, 24 Fr. 8673124

Dilatations obturator, 24 Fr. 8673224

Spezial Fiber light cable blue, Set
2,3 m **806735231**

PANOVIEW telescope blue, 30° 8654.522
optional: PANOVIEW telescope blue, 12° 8654.531

Cutting electrode mono
24 Fr., 0.25 mm, 12°/30°, for single use,
single sterile packed (PACK=10 pcs.) **46782425**

* These are recommended instrument combinations.
Further information can be found at www.richard-wolf.com

Order data

Recommended instrument combinations*
for use with **System blue**



TUR-B/bipolar
SHARK continuous irrigation resectoscope
22/24 Fr., 30°, for bipolar resection of bladder tumors

- Working element bipo,**
active, closed **8680.205**
- optional: Working element bipo,**
passive, closed **8680.225**
- Outer sheath, 24 Fr. 8675424**
- Internal sheath, 22 Fr. 8675322**
- Obturator, 22 Fr. 8673022**
- Viewing obturator, 22 Fr. 8673122**
- Spezial Fiber light cable blue, Set**
2.3 m **806735231**
- PANOVIEW telescope blue, 30° 8654.522**
optional: PANOVIEW telescope blue, 12° 8654.531
- Cutting electrode bipo**
22 Fr., 0.25 mm, 12°/30°, for single use,
single sterile packed (PACK=3 pcs.)..... **4622.2533**
- Cutting electrode bipo**
22 Fr., 0.30 mm, 12°/30°, for single use,
single sterile packed (PACK=3 pcs.)..... **4622.1333**
- Coag electrode bipo**
22 Fr., 12°/30°, for single use,
single sterile packed (PACK=3 pcs.)..... **4623.0243**



TUR-B/bipolar
SHARK continuous irrigation resectoscope
24/26 Fr., 30°, for bipolar resection of bladder tumors

- Working element bipo,**
active, closed **8680.205**
- optional: Working element bipo,**
passive, closed **8680.225**
- Outer sheath, 26 Fr. 8675426**
- Internal sheath, 24 Fr. 8675324**
- Obturator, 24 Fr. 8673024**
- Viewing obturator, 24 Fr. 8673124**
- Spezial Fiber light cable blue, Set**
2.3 m **806735231**
- PANOVIEW telescope blue, 30° 8654.522**
optional: PANOVIEW telescope blue, 12° 8654.531
- Cutting electrode bipo**
24 Fr., 0.25 mm, 12°/30°, Einweg,
single sterile packed (PACK=3 pcs.)..... **4622.2513**
- Cutting electrode bipo**
24 Fr., 0.30 mm, 12°/30°, for single use,
single sterile packed (PACK=3 pcs.)..... **4622.1313**
- Cutting electrode bipo**
(oval, especially for en bloc resection)
24 Fr., 0.30 mm, 12°/30°, for single use,
single sterile packed (PACK=3 pcs.)..... **4622.1323**
- Coag electrode bipo**
24 Fr., 12°/30°, for single use,
single sterile packed (PACK=3 pcs.)..... **4623.0223**



NEW: HF-Generator 2260

For monopolar and bipolar applications

HF surgery generator 400 kHz

for the connection of monopolar and bipolar accessories, international version (Bowa, Olympus, Storz, Valleylab, KLS) **2260001**

HF surgery generator 400 kHz

for the connection of monopolar and bipolar accessories, Erbe version (only Erbe) **2260002**

Footswitch 2 pedals L 5 m,

with fixed connection cable **2260021**

Monopolar application:

HF neutral electrode cable mono L 4.5 m,

reusable **2260031**

Neutral electrode

for use with high-frequency surgery product, Foil bag with 5 neutral electrodes, (PACK = 50 pcs.) **1280H**

Bipolar application:

HF connection cable (international version),

bipo, 3 m **8108233**

HF connection cable (international version),

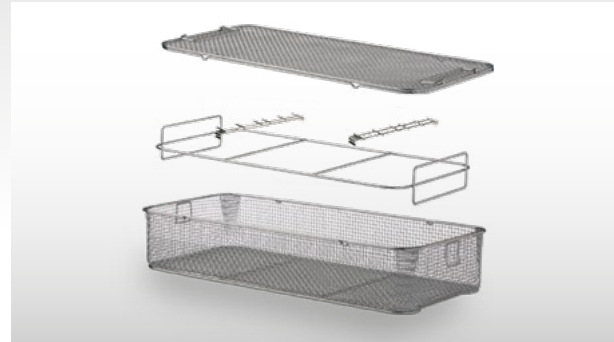
bipo, 5 m **8108253**

HF connection cable (Erbe version),

bipo, 4 m **20196-119**

HF connection cable (Erbe version),

bipo, 4,5 m **21196-119**



Reprocessing

For the instrument combinations*

Perforated basket for camera head (Pendul blue HD)

for machine reprocessing, sterilization, storage and transport **38002**

Spare part: Set of fixing chains **643301174**

Perf. basket for standard telescope 2 (PANOVIEW blue

telescopes) for machine reprocessing, sterilization, storage and transport **38016**

Spare part:

Fixing chain with 4 balls **64271020**

Spring clip for perforated basket **64076028**

Universal perforated basket 3 (for TUR-B bipo/mono

SHARK continuous irrigation resectoscope with accessories) for sterilization, storage and transport **33003**

optional:

Universal perforated basket 5 for TUR-B bipo/mono

SHARK continuous irrigation resectoscope with accessories) for sterilization, storage and transport **33005**

for this:

Instrument mat for perforated basket **33301**

Fastening set for perforated basket **33303**

Auxiliary equipment for manual reprocessing:

Tray (W x H x D) 432 x 100 x 150 mm **68601**

Cleaning brushes can be found in our Hygiene catalog and the corresponding instructions for use.

* These are recommended instrument combinations. Further information can be found at www.richard-wolf.com



DUOMED

Duomed Swiss AG

Grenzstrasse 5a, 6214 Schenkon

Tel. +41 (0)41 510 07 00

www.duomed.com



spirit of excellence

Subject to modifications. Please note that some products may not be available in all countries. Please always take note of the information that is provided with the product. For more detailed information, please consult with your contact partner or directly with Richard Wolf GmbH.

D705er091121

Richard Wolf GmbH
Pforzheimer Straße 32
75438 Knittlingen, Germany

Tel.: +49 7043 35-0
Fax: +49 7043 35-4300
info@richard-wolf.com

Co-CEOs:
Jürgen Pfab
Jürgen Steinbeck

Trade Register: Mannheim HRB 510031
VAT no.: DE144521586
Tax no.: 48020/00171

find us on
Social Media
richard-wolf.com

