



VIRTUAL SCALE FOR
SIZE ESTIMATION SUPPORT

SCALE EYE

ELUXEO™
ULTRA



DUOMED

FUJIFILM
Value from Innovation



IN-VIVO **SCALE EYE** FOR YOUR DAILY EXAMINATIONS



IMPORTANCE OF MEASUREMENT

Lesion size is considered important information when deciding on therapeutic intervention within the colon e.g. resect and discard, EMR, and ESD. However, it is not always straight-forward to estimate lesion size in the endoscopic field of view.

Fujifilm has developed SCALE EYE¹, a function designed to aid endoscopists in estimating the size of lesions in the colon.

By simply pressing the endoscope switch, SCALE EYE is activated to support the endoscopist to determine the size of the lesion within the endoscopic field of view.

SCALE EYE



¹ More detailed information of SCALE EYE is provided in the operation manual

EASY ONE-STEP OPERATION

Virtual scale can be activated or deactivated by pushing the switch on the endoscope or through the switch on the processor itself. The allocation of the endoscope switch can be allocated in the endoscope setup menu.



Virtual Scale mode

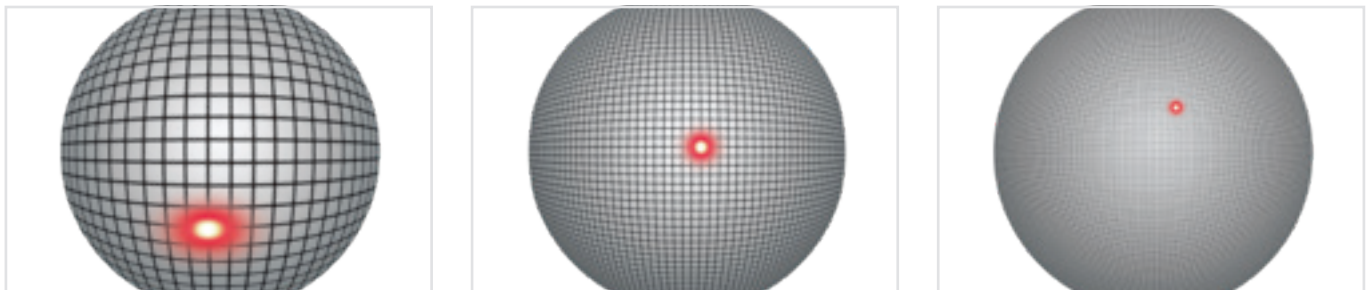


HOW SCALE EYE WORKS

Virtual scale technology is intended to support endoscopists performing colonoscopies by providing a size estimation of targeted lesions and clinically relevant artefacts which could be significant in clinical diagnosis.

1. Laser-equipped endoscope

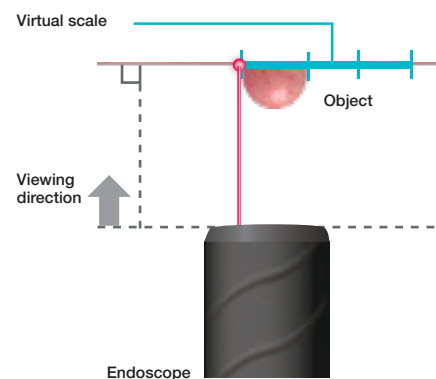
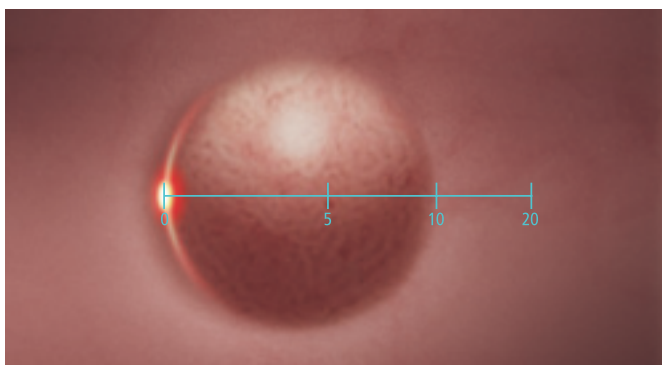
- The endoscope is equipped with a laser. The laser point is visible within the endoscopic image.
- The position of the laser point changes relative to the distance between the tip of endoscope and the object. Depending on this laser point position, the scale interval size adjusts automatically.



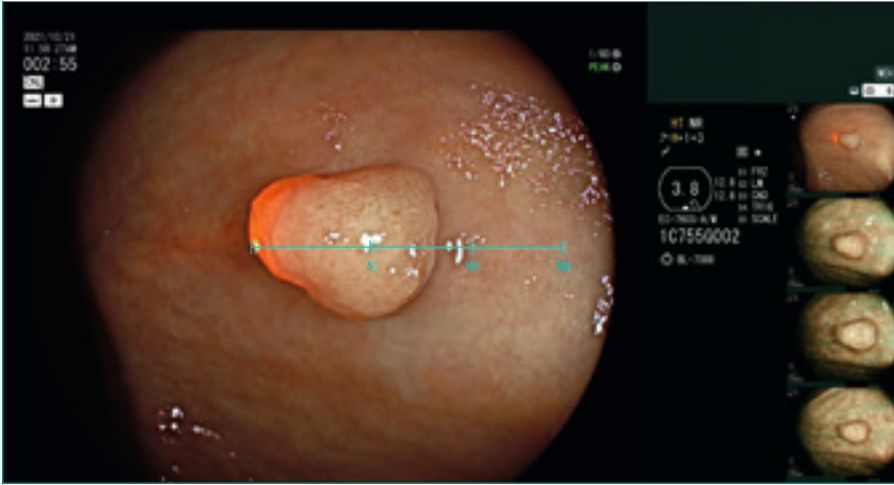
Near Far

2. Virtual scale software

- The software detects the position of the laser point in the endoscopic field of view and displays the virtual scale on the right side.
- To compare the size of an object with the virtual scale, the endoscopist positions the laser point on the left edge of the object.



SIMPLE USER INTERFACE

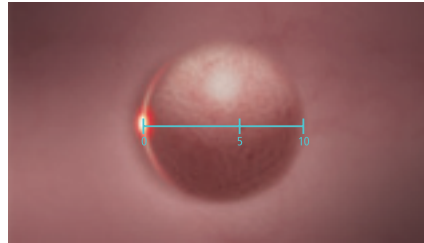


MULTIPLE MEASUREMENT SCALES

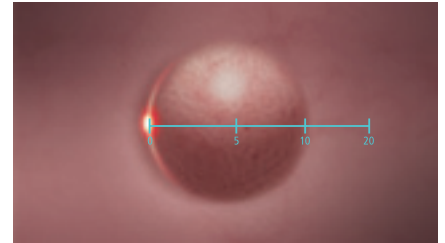
Five different scales are available according to the user preference



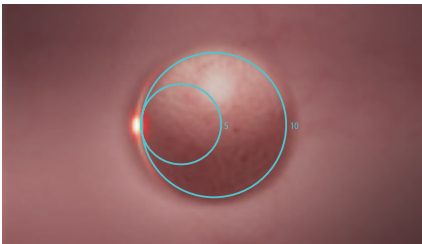
Line 5 mm



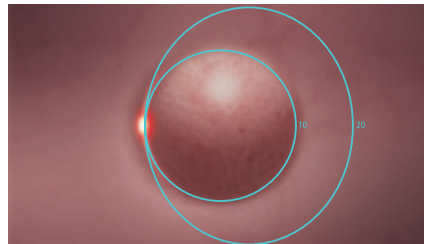
Line 5-10 mm



Line 5-10-20 mm



Circle 5-10 mm



Circle 10-20 mm

Error display

If there is an error in the virtual scale reading, it will be highlighted with a yellow graphic. This may occur when the object is out of the effective range (between 4 mm and 30 mm) or when the software cannot detect the laser.











Line error display



Circle error display

FROM SCREENING TO TREATMENT

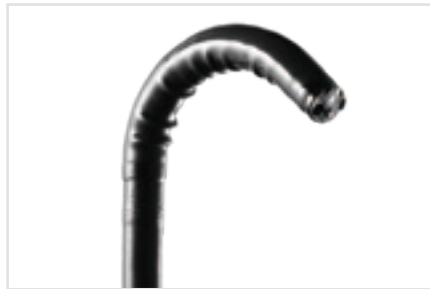
Virtual scale functionality is designed to be used exclusively with the EC-760S-A/M or EC-760S-A/L colonoscope which were developed with the aim to cover clinical needs in colonoscopy during all phases of the procedure.

INSERTION	SCREENING	MEASURING	CHARACTERISATION
<ul style="list-style-type: none"> Flexibility Adjustment Adaptive Bending Advanced Force Transmission 	<ul style="list-style-type: none"> Linked Color Imaging 170° wide field of view CAD EYE¹   	<ul style="list-style-type: none"> Linked Color Imaging Virtual Scale  	<ul style="list-style-type: none"> Blue Light Imaging CAD EYE¹  

EC-760S-A/M, L ELUXEO VIDEO COLONOSCOPE



To enable virtual scale functionality, the EC-760S-A/M and EC-760S-A/L colonoscopes are equipped with a red laser, which must be used in combination with SCALE EYE software EW10-VM01 and EX-1 hardware. SCALE EYE can be used in combination with White Light or LCI mode and with CAD EYE.



A unique symbol for the endoscope with "Virtual Scale"

Field of view	170°
Observation range	2–100mm
Bending capability	Up 180°/Down 180° Right 160°/Left 160°
ø Distal end	12.8mm
ø Flexible portion	12.8mm
ø Working channel	3.8mm
Working length	1,330/1,690mm
Total length	1,650/2,010mm
Virtual Scale	Compatible

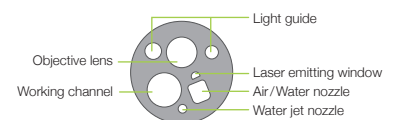
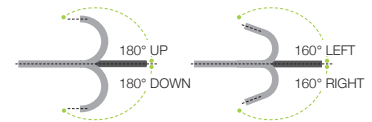


Image area, forceps entry position & water jet position

EW10-VM01 SOFTWARE

Virtual Scale 

EX-1 EXPANSION UNIT

Compatible processor	VP-7000
Compatible software	SCALE EYE (EW10-VM01), CAD EYE (EW10-EC02) Documentation Software (EW10-SC01)
Output	DVI-I x1, DVI-D x1
Input	DVI-I x1
Memory	30 hours of video (Full HD, MP4) and still image material (Full HD or SXGA selectable, TIFF, JPEG)
Power rating	100–240 VAC +/- 10%, 50/60 Hz, 1.25 to 0.60 A
Dimensions (W x H x D)	370.0 x 99.0 x 465.6 mm
Weight	7.1 kg

¹ CAD EYE requires additional software EW10-EC02

**NEVER
STOP**



DUOMED

Duomed Swiss AG

Grenzstrasse 5a, 6214 Schenkon

Tel. +41 (0)41 510 07 00

www.duomed.com

FUJIFILM

FUJIFILM Europe GmbH

Balcke-Dürr-Allee 6 | 40882 Ratingen, Germany

Tel.: +49 2102 5364-0 | endoscopy_eu@fujifilm.com

www.fujifilm-endoscopy.com