



SINGLE-USE

BRONCHO VIDEOSCOPE

3 SIZES,
5 APPLICATION
AREAS



SBV-1 SINGLE-USE BRONCHOSCOPE



INGENUITY AND INSIGHT

Full range of single-use bronchoscopes for all the clinical needs of critical care and the bronchoscopy suite.

A larger working channel bronchoscope for interventional procedures. The plug and play system allows ease of use from standard to difficult or emergency procedures.



No Sterilisation



No Cross Infection

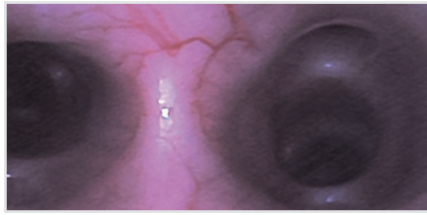


No Maintenance

FEATURES



With **120°** field of view and **0.5-120mm** depth of field, bring a wide and clear field of vision and can help identify the pathological changes in the bronchial lumen.



Superior optical performance. Accurately shows subtle details of the interiors of the bronchial tree.



The **±60°** shaft rotation supports a smoother insertion of the bronchoscope, optical adaptation during procedures and easier access to biopsy port.



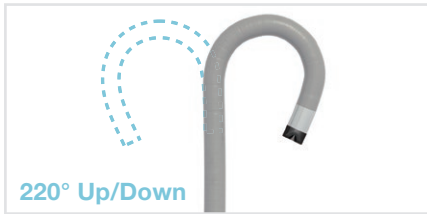
The direction of the suction button is adjustable, which can prevent tangled pipes.



Suitable for both left and right hands.



Slender and flexible design allows for easier intubation for the operator and procedural comfort for the patient.

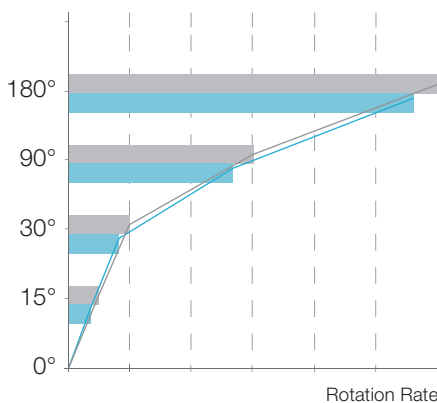


Two-way bending **220° Up/Down** supports smoother insertion into upper lobe bronchi.



The passive bending function allows the bronchoscope to navigate the airways with ease; benefiting the patients' procedural experience.

ROTATION ANGLE

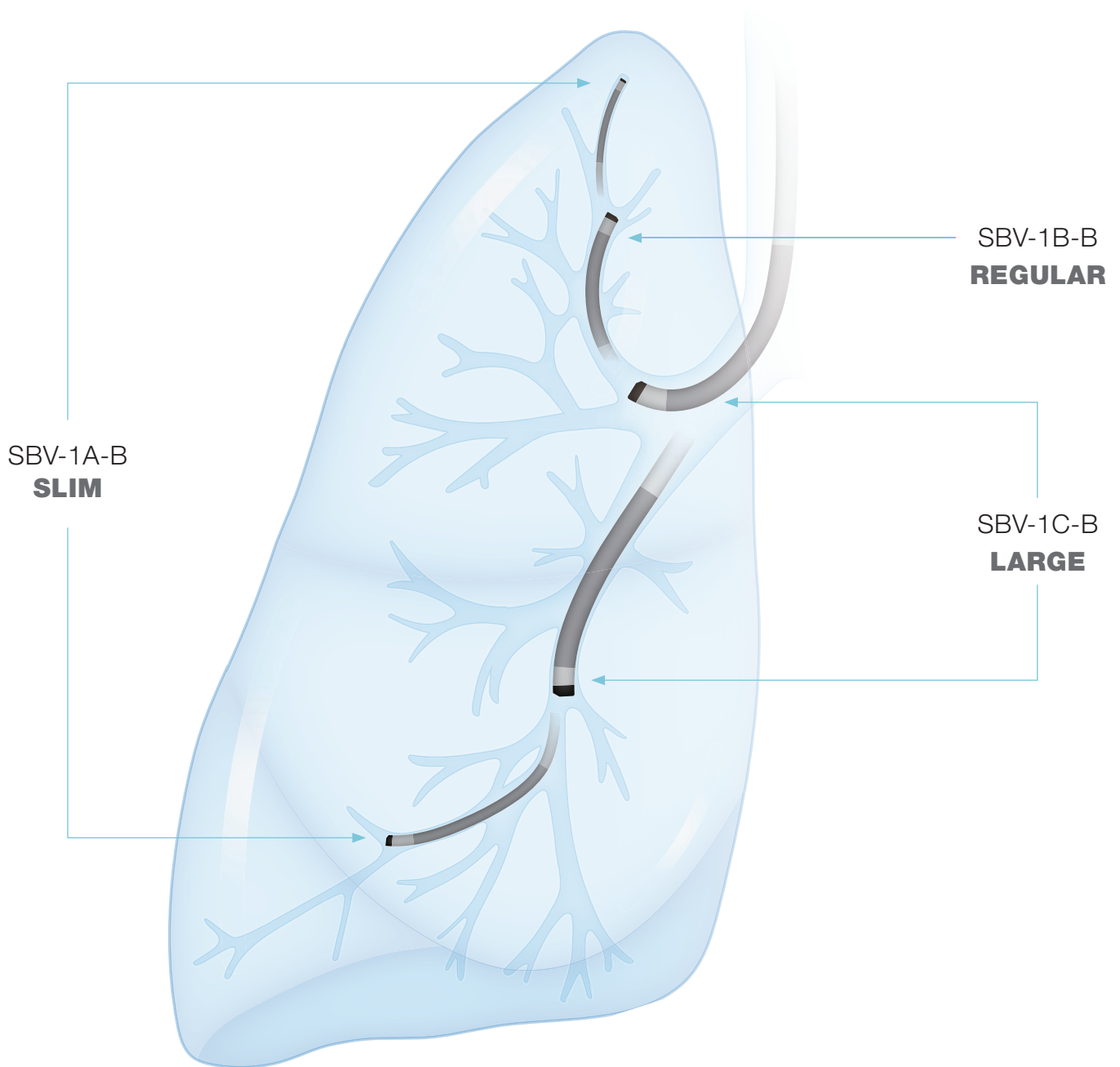


Control handle rotation Insertion part rotation

Data source: Obstructed rotation manoeuvrability internal test

Excellent manoeuvrability ensures that the operation is on effective. Even with instruments in the working channel, it can be manipulated at will.

THREE SPECIFICATIONS



SLIM



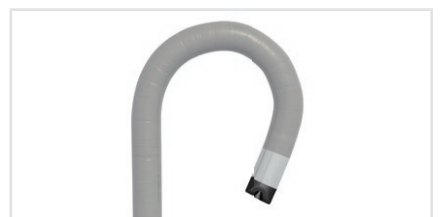
UltraSlim can reach even further. With SBV-1A-B, a Φ 2.8mm insertion section combined with a Φ 1.2mm working channel.

REGULAR



The most **versatile** bronchoscope. SBV-1B-B, with a slim Φ 4.2mm insertion section combined with Φ 2.0mm working channel.

LARGE



Therapeutic bronchoscope SBV-1C-B with a Φ 5.6mm insertion section and a Φ 2.8mm working channel. Large channel achieves exceptional fluids from patient's bronchi.

SBV-1A-B/B-B/C-B

Model	Field of View	Depth of View Field	Outer Diameter of Insertion Section (OD)	Working Channel (ID)	Working Length	Total Length	Angulation Range
SBV-1A-B			φ 2.8mm	φ 1.2mm			
SBV-1B-B	120°	0.5~120mm	φ 4.2mm	φ 2.0mm	600mm	920mm	220° Up/Down
SBV-1C-B			φ 5.6mm	φ 2.8mm			



SBV-1

HDVS-S100A PROCESSOR

THIRD PARTY PRODUCT

Model	Size WxHxD (mm)	Weight (kg)	Power Supply Requirement	Output	Interface	Function
HDVS-S100A	300 × 225 × 57	2.5	100-240V	DVI*1 SDI*2	Foot Switch USB	WHT-BAL, GAIN, FREEZE, ZOOM, LED, ENH/S-IMAGE, VIDEO, PHOTO, USB



HDVS-S100A



Foot Pedal

HDVS-S300 PORTABLE TOUCHSCREEN MONITOR

THIRD PARTY PRODUCT

Model	Special Features	Size WxHxD (mm)	Screen Size (mm)	Resolution (P)	Output	Weight (kg)	USB Interface	Storage	Battery Operation
HDVS-S300A	Sharpness Denoise, Gain	332 x 240 x 50	13.3" TFT	1920x1080	HDMIx1 SDIx1	2.3	1 x Type C 1 x Type A	Max 128 GB (int.) Add. 256 GB (ext.)	4h



HDVS-S300

For more information please contact endoscopy_eu@fujifilm.com or



DUOMED

Duomed Swiss AG

Grenzstrasse 5a, 6214 Schenkon

Tel. +41 (0)41 510 07 00

www.duomed.com

Manufactured by



Scivita Medical Technology Co.Ltd.

No.8, Zhong Tian Xiang, Suzhou Industrial
Park, Suzhou, Jiangsu,
Province, P.R.China, 215000
Tel.: +86-512-8187 7788
www.scivitamedical.com,
info@scivitamedical.com

Distributed by



FUJIFILM Europe GmbH

Balcke-Dürr-Allee 6 | 40882 Ratingen, Germany
+49 2102 5364-0 | endoscopy_eu@fujifilm.com
www.fujifilm-endoscopy.com