



## SmartBand® Multi-Band Ligation System Quick Reference Guide: Set Up

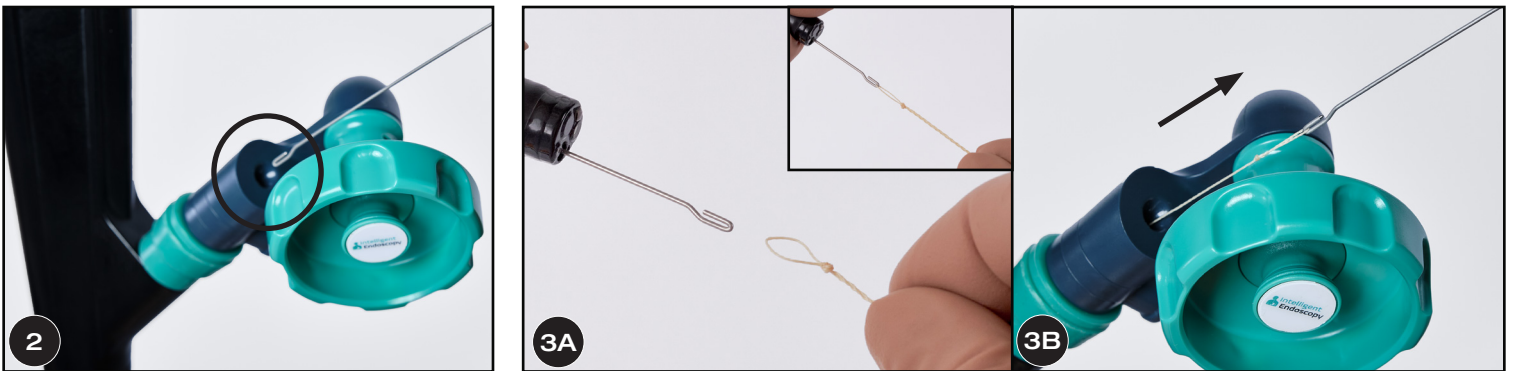
**Intended Use:** This device is used to endoscopically ligate esophageal varices at or above the gastroesophageal junction and to ligate internal hemorrhoids.

### SLK6, SLK6LF, SLP6, SLP6LF



**1A** Insert handle stem through cap and into accessory channel.

**1B** For endoscopes with luer lock connection: Attach adapter directly to accessory port luer connection. Then insert handle stem into adaptor.



**2** Introduce loading device through center of ligation handle and advance until tip of device exits endoscope.

**3A** Attach deployment cord loop to hook feature of loading device. Withdraw loading device and deployment cord through ligation handle.



**4** Place barrel on tip of endoscope. Advance barrel using a continuous rocking motion until scope tabs stop the barrel. Correct barrel placement can be verified when you cannot see the scope tabs on the monitor. Do not use excessive force when advancing the barrel onto endoscope.



# SmartBand®

Multi-Band Ligation System



5 Attach deployment cord loop onto ligation handle hook feature.



6 Rotate ligation handle slowly to remove the extra slack in the deployment cord.



7 Lubricate endoscope and exterior portion of barrel.

## Removing the SmartBand Device



8 Deploy any remaining bands into biohazardous medical waste container.



9 Remove handle and attached deployment cord from accessory channel.



10 Remove barrel by turning in a counterclockwise motion, twisting barrel off the endoscope. DO NOT use excessive force to remove the barrel from the endoscope.

**This information is to be used as a reference guide only. Review the instructions for use prior to using the device.**



**DUOMED**

Duomed Swiss AG  
Grenzstrasse 5a, 6214 Schenkon  
Tel. +41 (0)41 510 07 00  
[www.duomed.com](http://www.duomed.com)

**STERIS**

Endoscopy